

Casa Diablo IV Geothermal Development Project

Joint Environmental Impact Statement/Environmental Impact Report
Public Scoping Meeting



April 18-19, 2011

Public Scoping Meeting Agenda

Agenda

- Overview of Meeting Purpose and Agenda
- Welcome and Opening Remarks (BLM)
- Description of EIS/EIR Process and the Casa Diablo IV Geothermal Development Project (ESA)
- Questions and Answers
- Open House

Welcome & Opening Remarks

Participants and their Roles

Preparation of a Joint Environmental Impact Statement (NEPA) and Environmental Impact Report (CEQA)

- BLM - Manages subsurface mineral estate - Lead NEPA agency
- US Forest Service - Manages surface uses - Cooperating NEPA agency
- Great Basin Air Pollution and Control District - Lead CEQA agency
- Mammoth Pacific L.P. (Ormat Nevada subsidiary) - Project applicant
- ESA (Environmental Science Associates) - Consultant hired to prepare third party EIS/EIR*

* *Environmental Impact Statement/Environmental Impact Report*

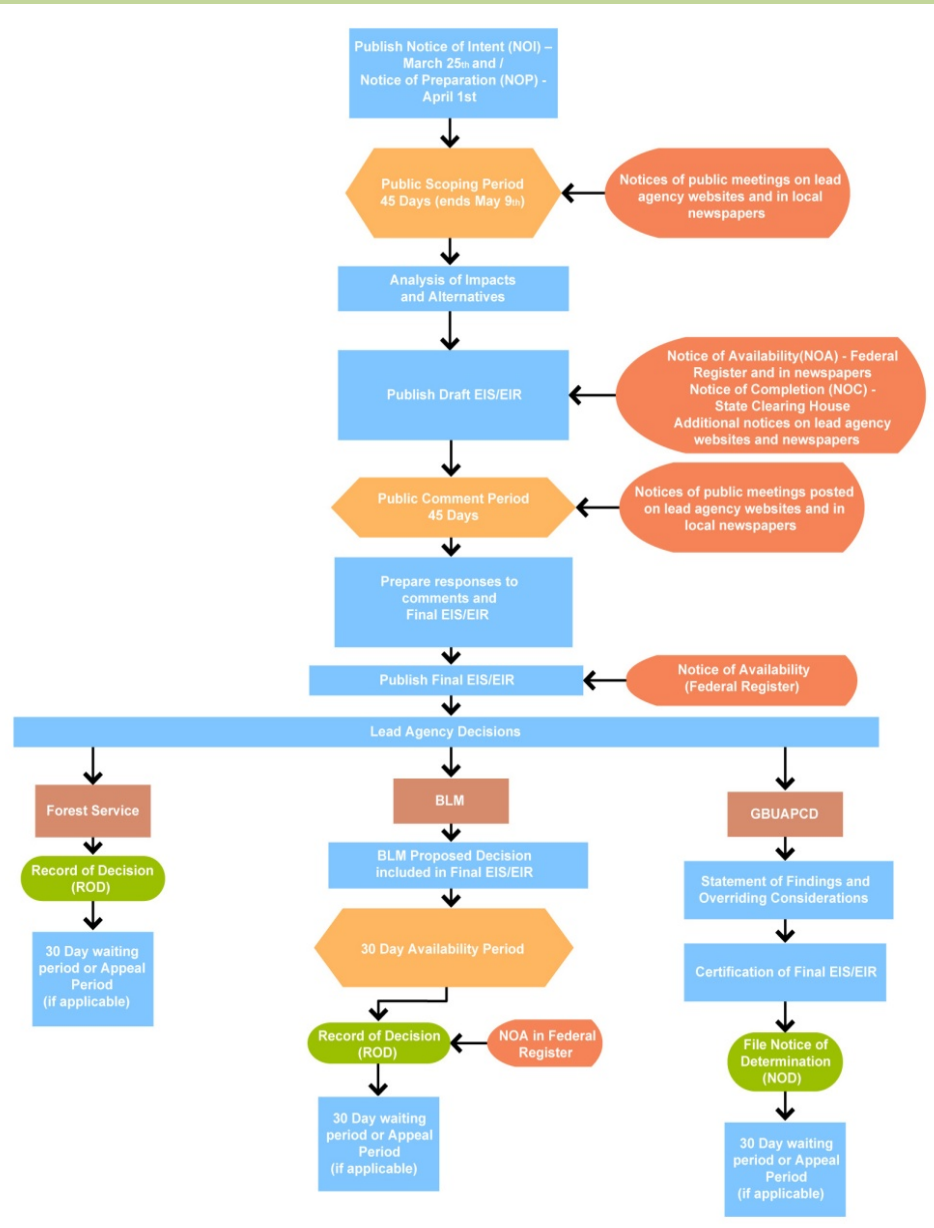
Lead Agency Decisions

Three separate decisions will be made

- **BLM** – issuance of permit to construct Casa Diablo IV power plant and facilities, wells, and pipelines (including routes)
- **US Forest Service** – issuance of use permit for access routes (including any re-routing of existing roads)
- **Great Basin Unified Air Pollution and Control District** – issuance of an air permit for project construction and operation

Overview of the EIS/EIR Process

NEPA/CEQA Process



Draft EIS/EIR Analysis

- ✓ Aesthetics
- ✓ Air Quality
- ✓ Biological Resources
- ✓ Cultural Resources
- ✓ Geological Resources
- ✓ Land Use
- ✓ Hazardous Materials
- ✓ Hydrology and Water Quality
- ✓ Noise
- ✓ Traffic
- ✓ Recreation
- ✓ Public Services and Utilities

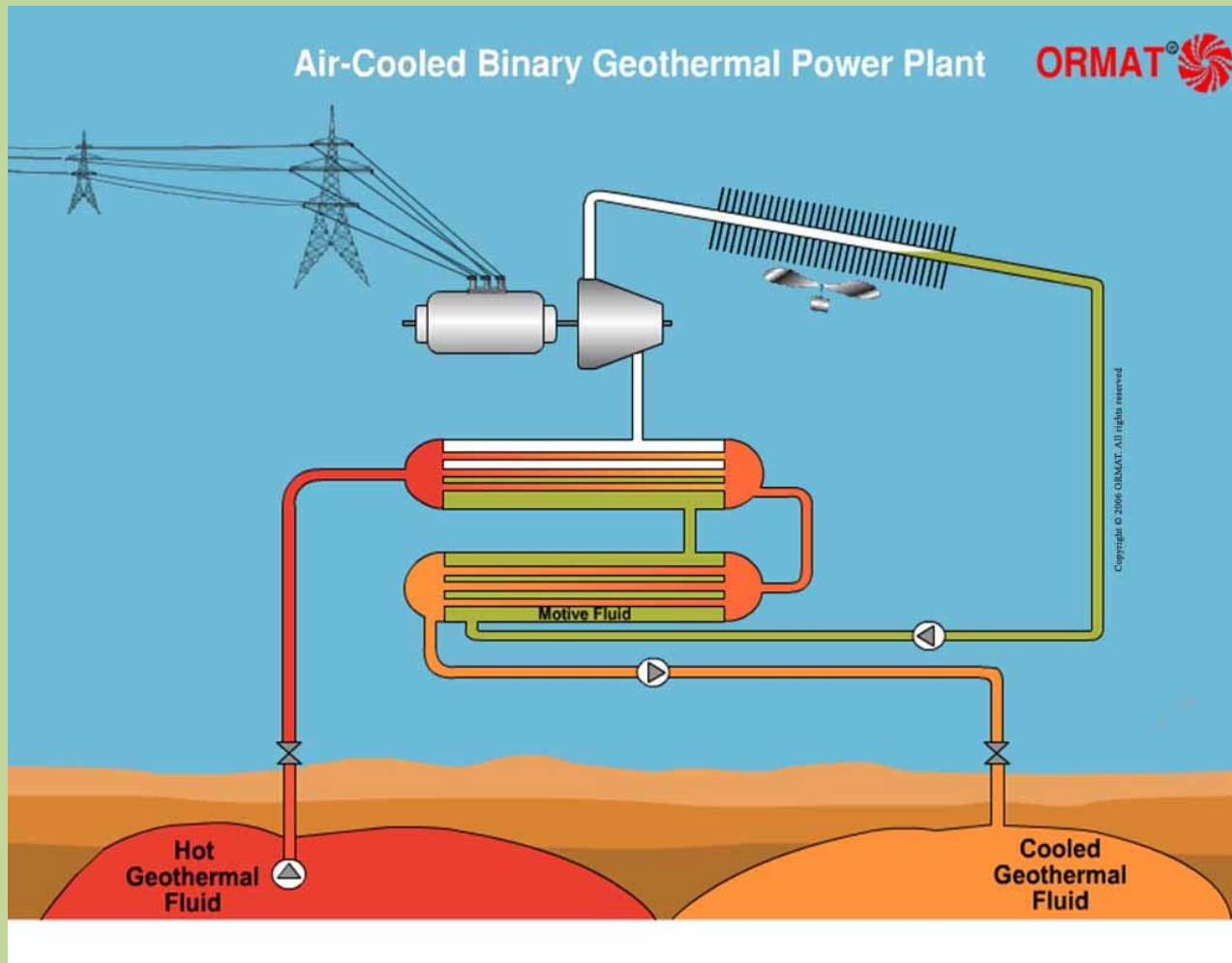
Purpose of Public Scoping

Provide the public and agencies an opportunity to provide input into the scope and content of the EIS/EIR by identifying:

- ✓ Specific environmental concerns to be analyzed
- ✓ Potential impacts resulting from project construction and increased geothermal production
- ✓ Scope and range of alternatives

Project Overview

Geothermal Power



Key Project Components

- New Power Plant
- Geothermal Wells
- Pipelines
- Transmission Line



SOURCE: Ormat, 2010

Casa Diablo IV Geothermal Project
Figure
 Project Layout

Power Plant

New 33 net megawatt (MW) binary power plant

- ✓ Located north of SCE Substation (not visible from Highway)
- ✓ Two (2) Ormat Energy Converters
- ✓ An underground electric transmission line to interconnect to the SCE Substation.

May include evaporative assist cooling in summer

- ✓ Reverse osmosis water treatment plant
- ✓ Recycled water pipeline from MCWD

Would supply enough electricity for approximately 33,000 people.

Wellfield

An expanded geothermal well field

- ✓ Total of up to 16 wells (18 potential locations being considered)
- ✓ Two of the 16 wells already exist (drilled in 2010 as part of exploratory project)
- ✓ Up to 14 new wells to be drilled

Well pads

- ✓ 120x150 feet (0.4 acre) completed size
- ✓ Fenced enclosure
- ✓ Wellhead and small control building
- ✓ 2.5-acre disturbance during construction

Typical Well Pad



Pipelines

Production and Injection Pipelines

- ✓ Similar to and parallel existing Basalt Canyon pipeline
- ✓ Up to 28 inches diameter with insulation
- ✓ 12 – 18 inches off the ground
- ✓ Buried beneath USFS roads, Highway 395

Pipeline Undercrossing



Next Steps and How to Comment

Next Steps and Timeline

Public Scoping Period ends	May 9, 2011
Public Review of Draft EIS/EIR (including public hearings)	Summer 2011
Final EIS/EIR - Response to Comments	Early winter 2011
Certification of the EIS/EIR	Winter 2012
File Notice of Determination and Findings	Winter 2012
Agencies consider Project Approval	

How to Comment

- Place Scoping Comment Form in the boxes provided tonight or provide comments no later than **May 9, 2011**
- Send comments to:
 - Bureau of Land Management
 - Bishop Field Office
 - Attn: Casa Diablo IV Geothermal Development Project
 - 351 Pacu Lane, Suite 100
 - Bishop, CA 93514
 - FAX: (760) 872-5050
 - Email: cabipubcom@ca.blm.gov
 - Subject Line: Casa Diablo IV Project Scoping Comments
- Include name, address, and contact number for future correspondence related to the project (Be advised that your entire comment – including your personal information – may be made publicly available at any time. You can ask us to withhold from public review your personal identifying information, but we cannot guarantee that we will be able to do so.)

Effective Commenting

- Substantive and focused on the EIS/EIR analysis - what should be analyzed?
- Why you think the project has the potential to result in a significant environmental impact
- Scoping report will be prepared which summarizes comments received

Questions and Answers

Open House