



LEE VINING PAVEMENT REHABILITATION PROJECT

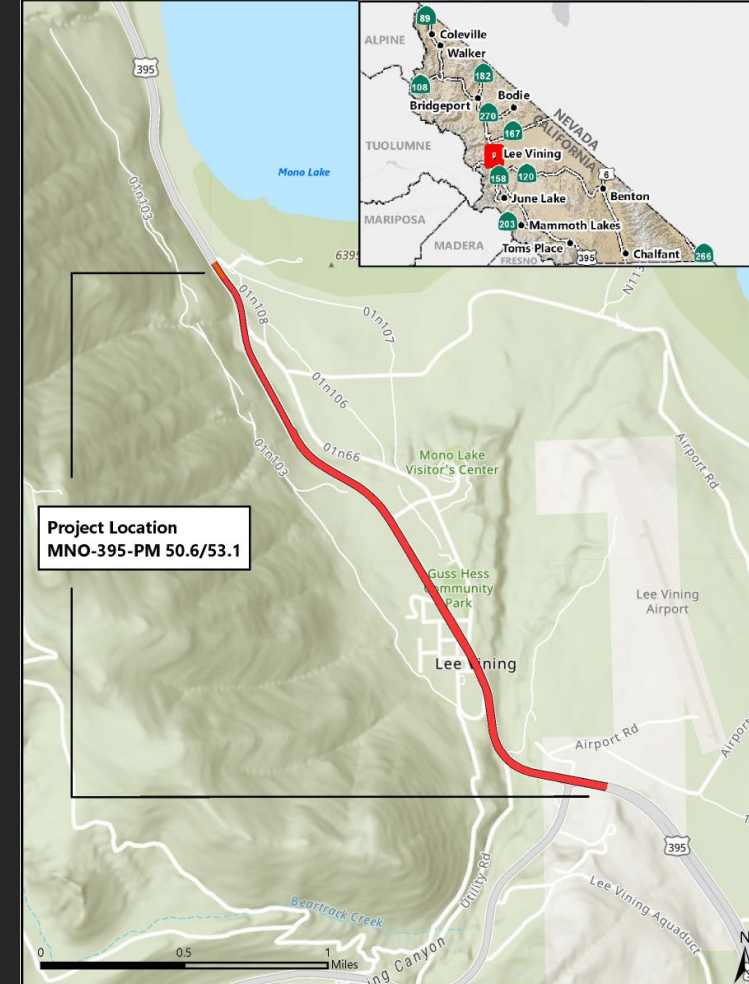
CALTRANS DISTRICT 9

LEE VINING PAVEMENT REHABILITATION PROJECT PROJECT INFORMATION

On US -395 from the 120 Intersection (Postmile 50.6) to Picnic Grounds Road (Postmile 53.1). The Lee Vining Pavement Rehabilitation Project proposes to:

- Rehabilitate the entire existing pavement area.
- Replace, repair, or construct new facilities including drainage, sidewalks, curb ramps, driveways, street lighting, landscape and guardrail.
- Reconstruct the entire U.S. 395 right of way from postmile 51.2 to 51.7 within the community of Lee Vining.
- Add permanent stormwater treatment facilities.
- Bring pedestrian facilities (sidewalks, crosswalks) up to ADA Standards.

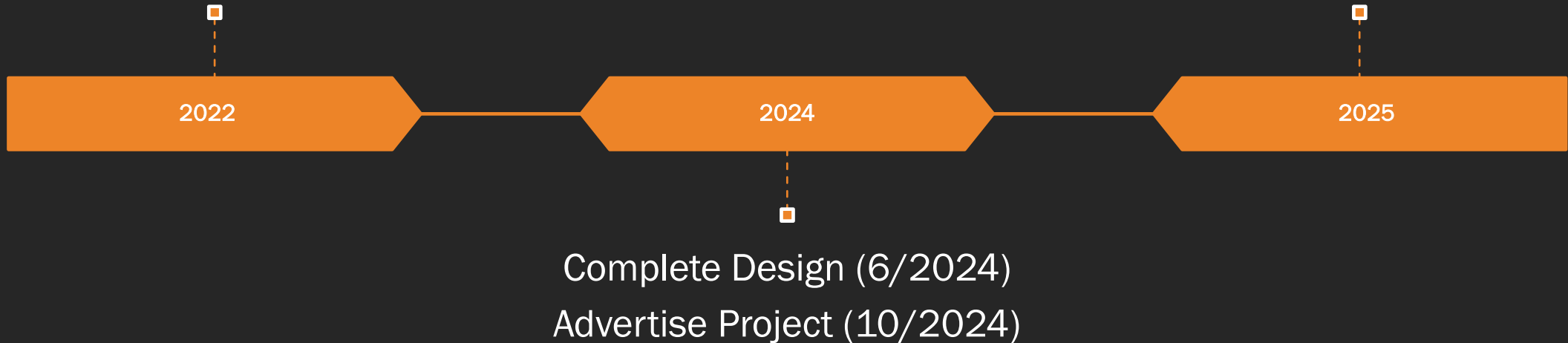
This Pavement Rehabilitation Project will reshape the look of Lee Vining for decades to come.



PROJECT SCHEDULE (SUBJECT TO CHANGE)

Project Approval & Environmental Document (Completed)
(4/2022)

Begin Construction (5/2025)
Complete Construction (10/2025)



LEE VINING PAVEMENT REHABILITATION PROJECT PUBLIC MEETING

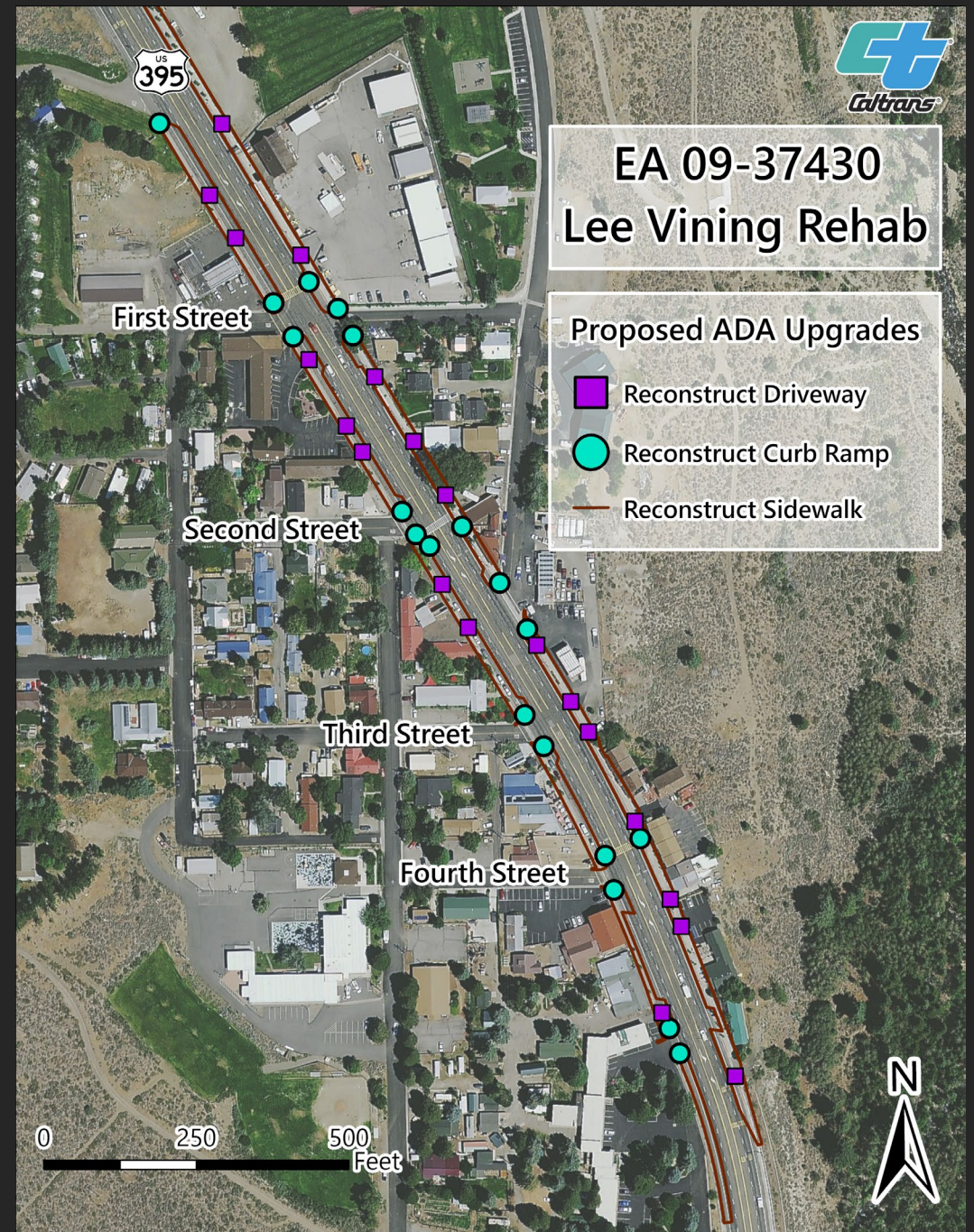
Caltrans presented this project to the Lee Vining Community in February 2022 and several guidelines were drawn:

- The roadway will be reduced from 5 to 3 lanes in the community of Lee Vining
- 6' Bike Lanes will be included in the Community of Lee Vining
- Curb Bulb-outs will be constructed at intersections and pedestrian crosswalks
- Curb Bulb-outs will slow snow removal activities in Lee Vining



LEE VINING PAVEMENT REHABILITATION PROJECT ADA UPGRADES

The Lee Vining Pavement Rehabilitation Project will reconstruct all driveways and curb ramps through Lee Vining as well as the sidewalk on both sides of U.S. 395

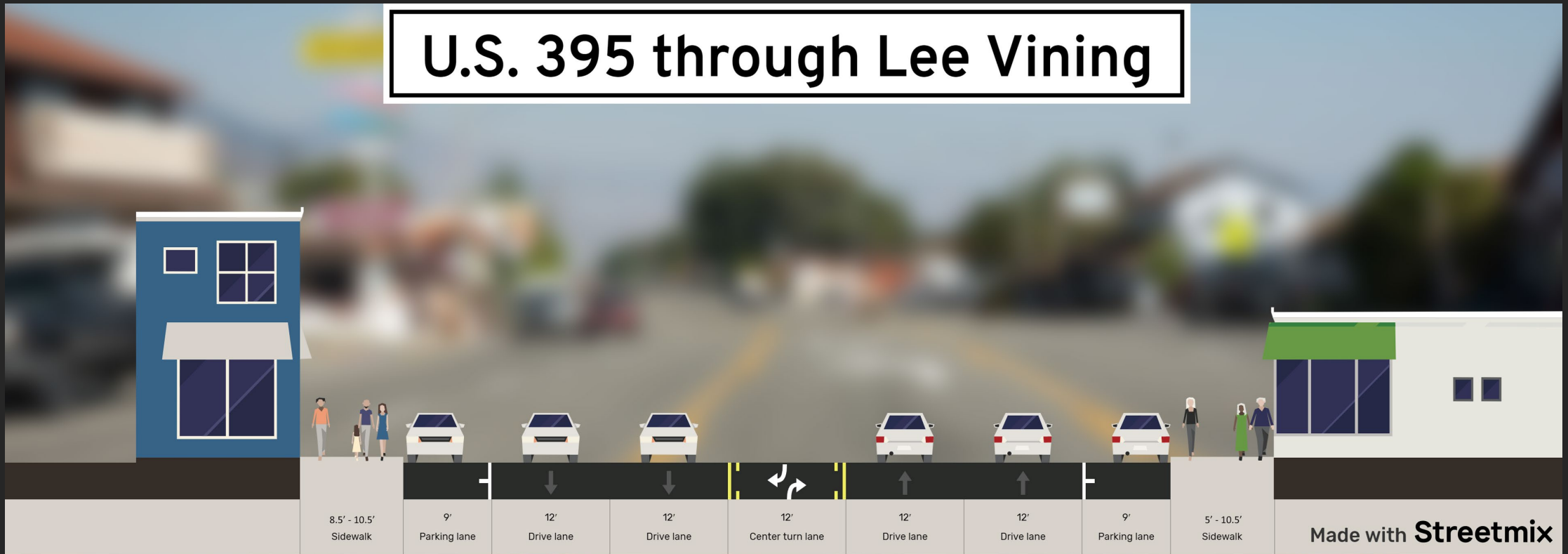


LEE VINING PAVEMENT REHABILITATION PROJECT DRAINAGE

- The Lee Vining Pavement Rehabilitation Project will replace or construct culverts throughout the project area, including within the limits of Lee Vining and beyond.
- Caltrans will construct infiltration swales on and off the Caltrans Right-of-Way, and a stormwater detention basin off the Caltrans Right-of-Way.



U.S. 395 through Lee Vining

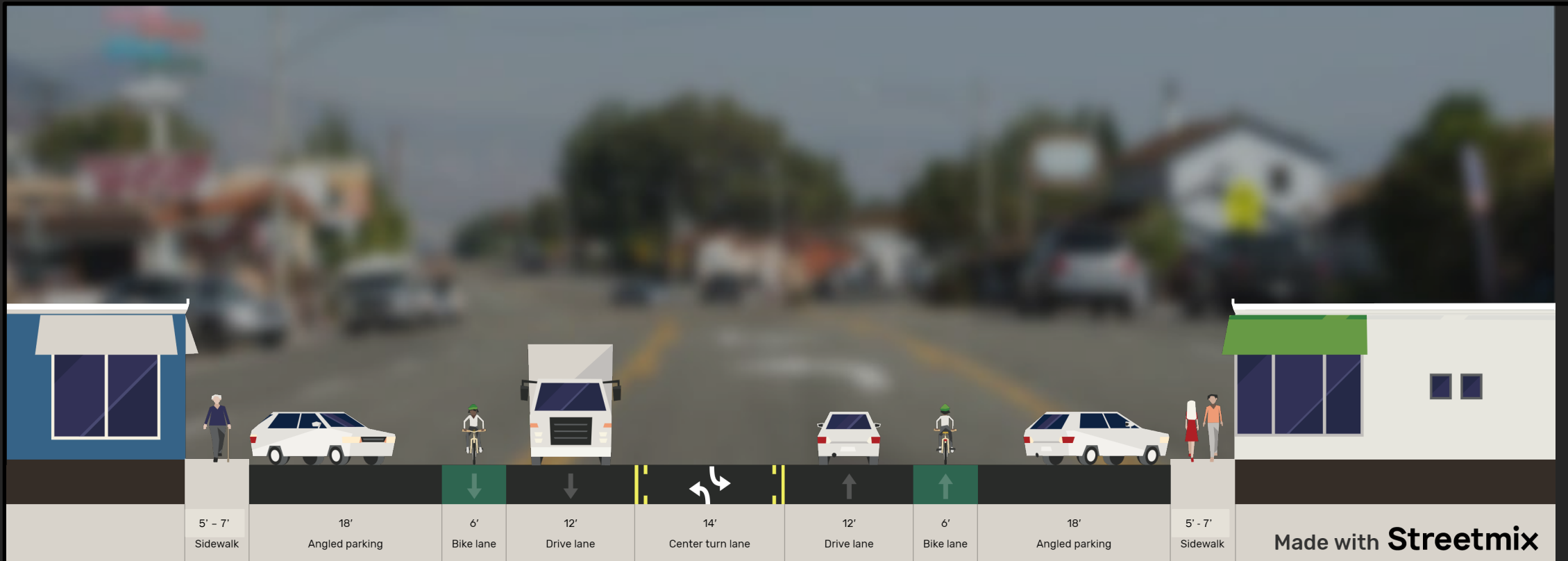


LEE VINING PAVEMENT REHABILITATION PROJECT CURRENT LAYOUT OF U.S. 395

LEE VINING PAVEMENT REHABILITATION PROJECT TYPICAL CROSS SECTION WITH PARALLEL PARKING

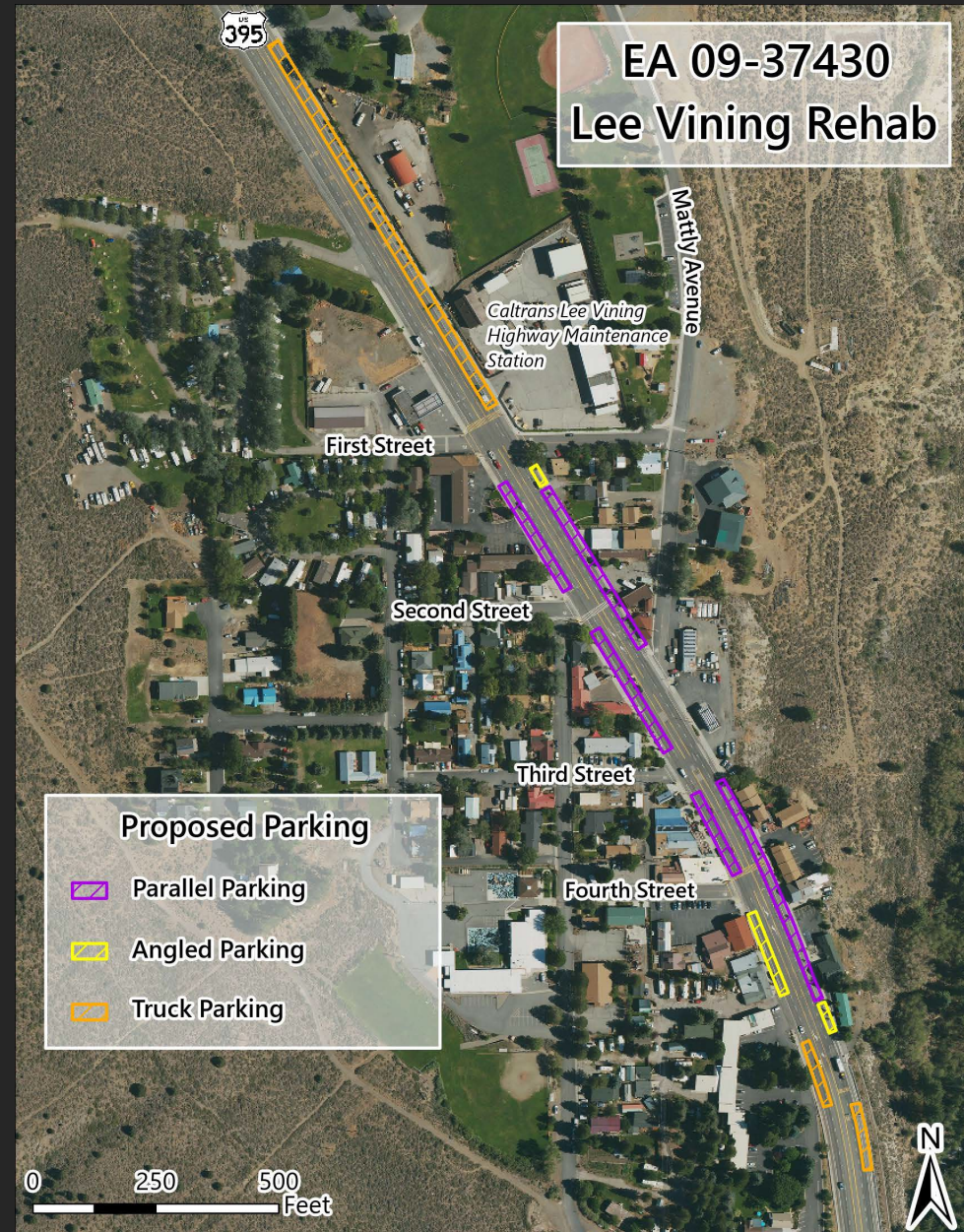


LEE VINING PAVEMENT REHABILITATION PROJECT TYPICAL CROSS SECTION WITH ANGLED PARKING



LEE VINING PAVEMENT REHABILITATION PROJECT PARKING

- This project will maintain the same number of on-street parking spaces as existing.
- Parallel parking is maintained on most blocks.
- Angled parking is proposed at several locations including the grocery store and the Mono Cone.
- Truck parking will be accommodated on the north and south ends of Town.



LEE VINING PAVEMENT REHABILITATION PROJECT LANDSCAPING & LIGHTING

- This project will replace existing street trees.
- Caltrans will construct pedestrian scale lighting
- The County and Caltrans need input on including additional landscape items such as planters, public art or other items the community desires.



LEE VINING PAVEMENT REHABILITATION PROJECT

Mike Collins - Design Engineer
Jill Tognazzini - Project Manager

Michael.R.Collins@dot.ca.gov
Jill.Tognazzini@dot.ca.gov

