

SCE Mammoth Lakes Storage Area One

As part of SCE's wildfire mitigation plan, inspections in critical fire areas have been performed to identify necessary system repairs and upgrades. SCE's Mammoth Lakes Storage Area One at 164 Industrial Circle in Mammoth Lakes, will act as material storage and contractor show up yards for crews making the repairs and upgrades identified as part of the inspection process.

Storage Area One

Storage Area One is a cleared and mostly level area within an existing industrial park. Earthen berms border the north and east sides of the yard, an existing block wall to the west and a chain link fence to the south.

The yard will operate from 6 am to 6 pm, or from sunrise to sunset, depending on the time of year. Storage Area One will act as a material storage yard for poles and wire reel storage. All potentially nuisance causing materials will be removed from the yard including trash bins, storage bins, porta potties, pole scrap bins and wire bins. Walk through inspections will be conducted prior to forecasted wind events to confirm there are no loose items/materials.



A mobile security guard will be onsite during non-working hours.

Dust control will be provided by water trucks on an as needed basis. Operation of the site will be consistent with surrounding uses and is not anticipated to generate potential nuisances.

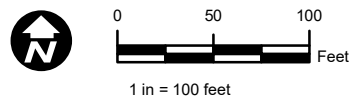
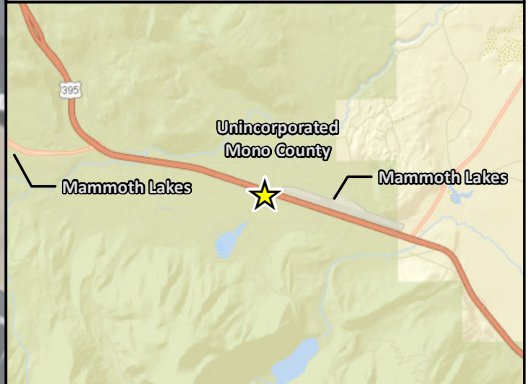
The impermeable parking BMP will be inspected on a monthly basis by the Yard's Stormwater Pollution Prevention Plan (SWPPP) inspector to verify the integrity of the system and recommend repairs and changes as necessary.

Point of Contact for yard issues: Jeremy Carlton (626) 233-4864

Mammoth Lakes Storage Area One

-  Yard Boundary
-  Containment Area

*Project component placement and dimensions are approximate.

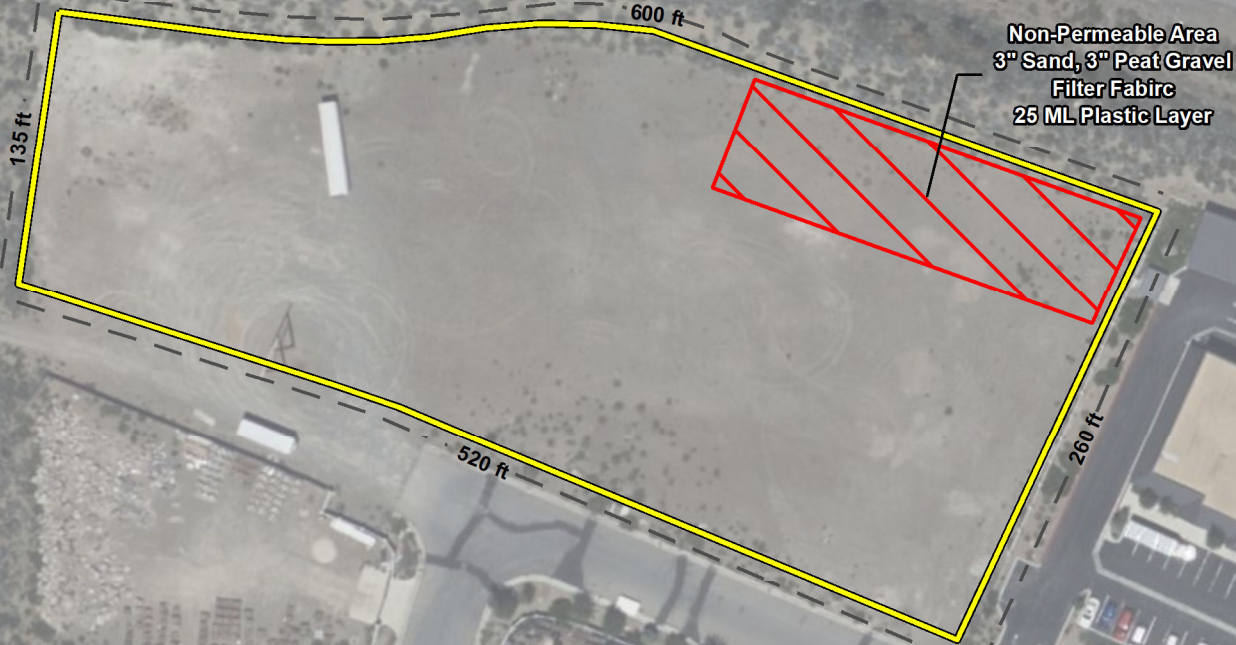
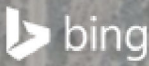


Create Date: 5/26/2022

Created By:
Rincon Consultants

Features depicted herein are planning level accuracy, and intended for informational purposes only. Distances and locations may be distorted at this scale. Always consult with the proper legal documents or agencies regarding such features. Cental Field Services

Service Layer Credits: Sources: Esri, HERE, Garmin, USGS, Intermap, INCREMENT P, NRCan, Esri Japan, METI, Esri China (Hong Kong), Esri Korea, Esri (Thailand), NGCC, (c) OpenStreetMap contributors, and the GIS User Community
© 2022 Microsoft Corporation © 2022 Maxar ©CNES (2022) Distribution Airbus DS



Path: I:\Projects\alpath\20-09559\Projects\21-11170 SCE ESD Stage Yard Env Rvw\Mammoth Lakes Storage Area One\Mammoth Lakes Storage Area One.mxd