




**MONO COUNTY**  
**COMMUNITY DEVELOPMENT DEPARTMENT**

**PLANNING DIVISION**  
**PREAPPLICATION REVIEW REQUEST**



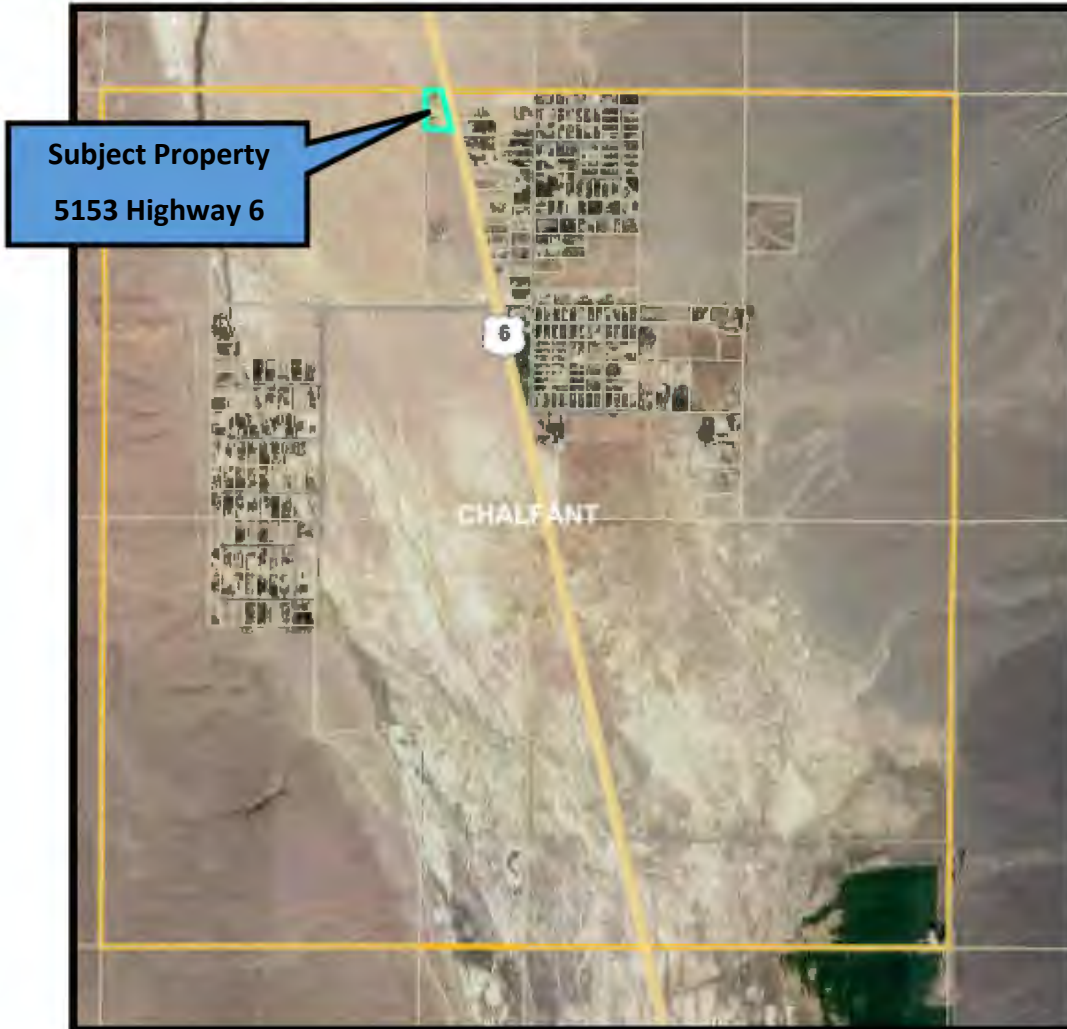
 	
<p><b>5153 Highway 6</b> 026-210-036-000</p> <p><a href="#">Print or View Value Notice</a></p>	
<b>Address</b>	5153 Highway 6
<b>Community</b>	Chalfant Valley
<b>Complex</b>	
<b>Land Use Designation</b>	Service Commercial (SC)
<b>Zoning</b>	NA
<b>Transient Rental</b>	To Be Determined
<b>Voting Precinct</b>	04 - Tri Valley
<b>Supervisor District</b>	Dist #2: Rhonda Duggan
<b>GIS Calculated Acres</b>	3.02
<b>Previous Assessment #</b>	002621036000000
<b>Latitude/Longitude</b>	37.534778, -118.371235

**GREGORY B. SAAD, CCIM**  
**SAAD REALTY PARTNERS, LLC**  
**SAAD DEVELOPMENT CORPORATION**  
 3601 SPRING HILL BUSINESS PARK, SUITE 200  
 MOBILE, ALABAMA 36608 | [WWW.SAAD.COM](http://WWW.SAAD.COM) | [GREGSAAD@SAAD.COM](mailto:GREGSAAD@SAAD.COM)  
 D: 251.964.8900 | C: 251.709.0330 | P: 251.478.7223



**MONO COUNTY**  
**COMMUNITY DEVELOPMENT DEPARTMENT**

**PLANNING DIVISION**  
**PREAPPLICATION REVIEW REQUEST**

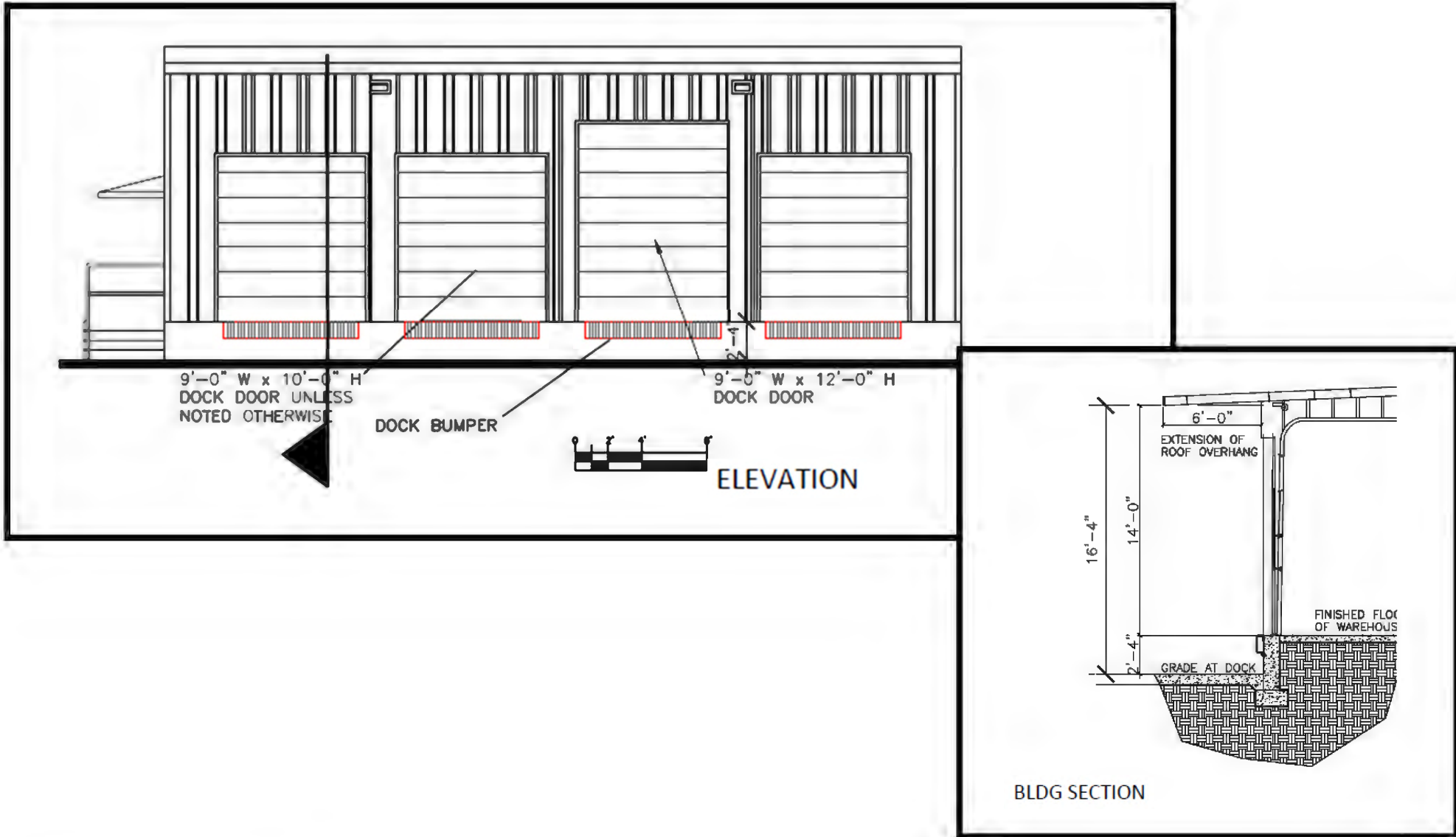


**GREGORY B. SAAD, CCIM**  
**SAAD REALTY PARTNERS, LLC**  
**SAAD DEVELOPMENT CORPORATION**  
3601 SPRING HILL BUSINESS PARK, SUITE 200  
MOBILE, ALABAMA 36608 | [WWW.SAAD.COM](http://WWW.SAAD.COM) | [GREGSAAD@SAAD.COM](mailto:GREGSAAD@SAAD.COM)  
D: 251.964.8900 | C: 251.709.0330 | P: 251.478.7223



**MONO COUNTY**  
**COMMUNITY DEVELOPMENT DEPARTMENT**

**PLANNING DIVISION**  
**PREAPPLICATION REVIEW REQUEST**

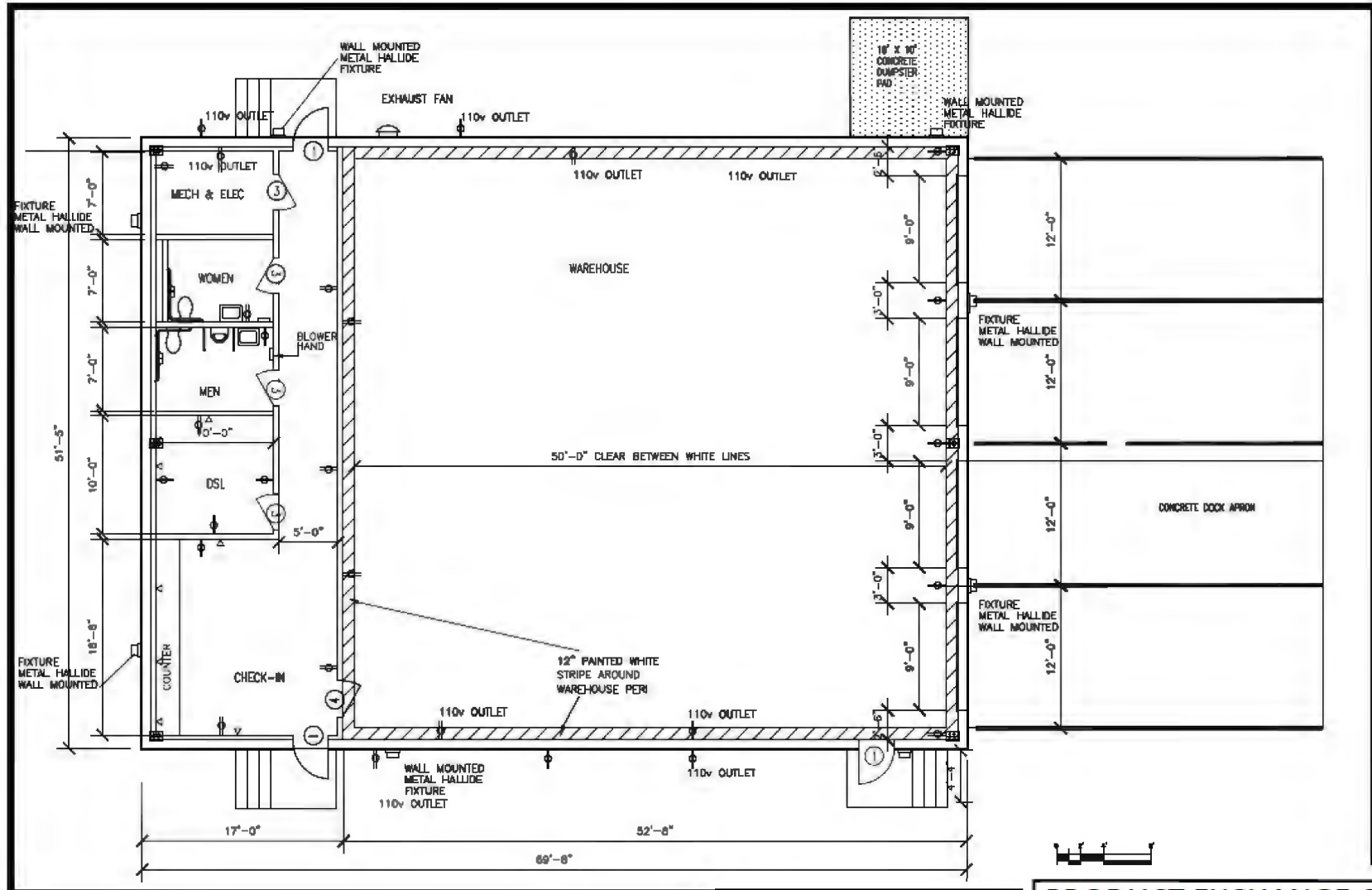


**GREGORY B. SAAD, CCIM**  
**SAAD REALTY PARTNERS, LLC**  
**SAAD DEVELOPMENT CORPORATION**  
3601 SPRING HILL BUSINESS PARK, SUITE 200  
MOBILE, ALABAMA 36608 | [WWW.SAAD.COM](http://WWW.SAAD.COM) | [GREGSAAD@SAAD.COM](mailto:GREGSAAD@SAAD.COM)  
D: 251.964.8900 | C: 251.709.0330 | P: 251.478.7223



**MONO COUNTY**  
**COMMUNITY DEVELOPMENT DEPARTMENT**

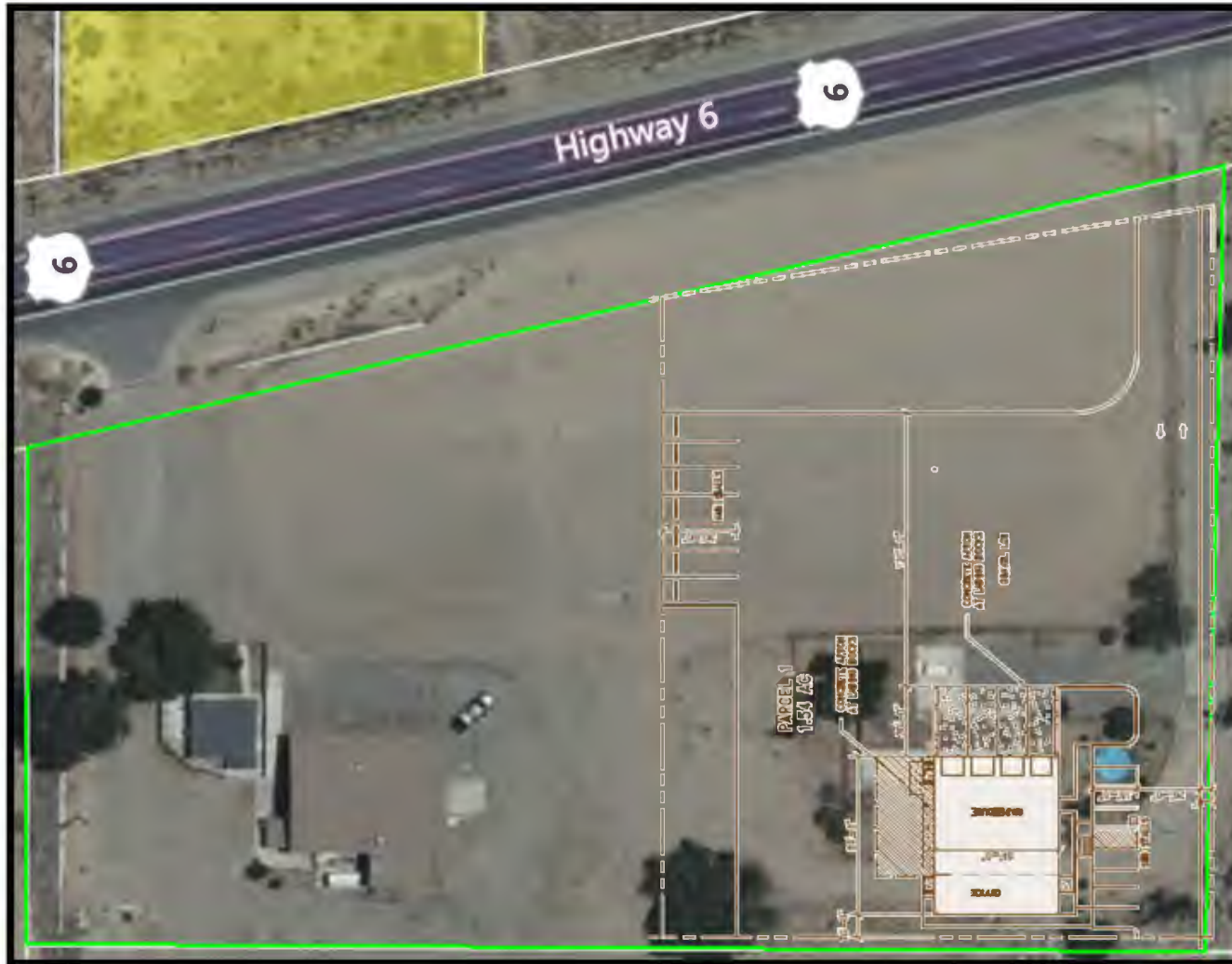
**PLANNING DIVISION**  
**PREAPPLICATION REVIEW REQUEST**



**PRODUCT EXCHANGE CENTER**  
**4 DOOR FACILITY With OFFICE**

**GREGORY B. SAAD, CCIM**  
**SAAD REALTY PARTNERS, LLC**  
**SAAD DEVELOPMENT CORPORATION**  
 3601 SPRING HILL BUSINESS PARK, SUITE 200  
 MOBILE, ALABAMA 36608 | [WWW.SAAD.COM](http://WWW.SAAD.COM) | [GREGSAAD@SAAD.COM](mailto:GREGSAAD@SAAD.COM)  
 D: 251.964.8900 | C: 251.709.0330 | P: 251.478.7223

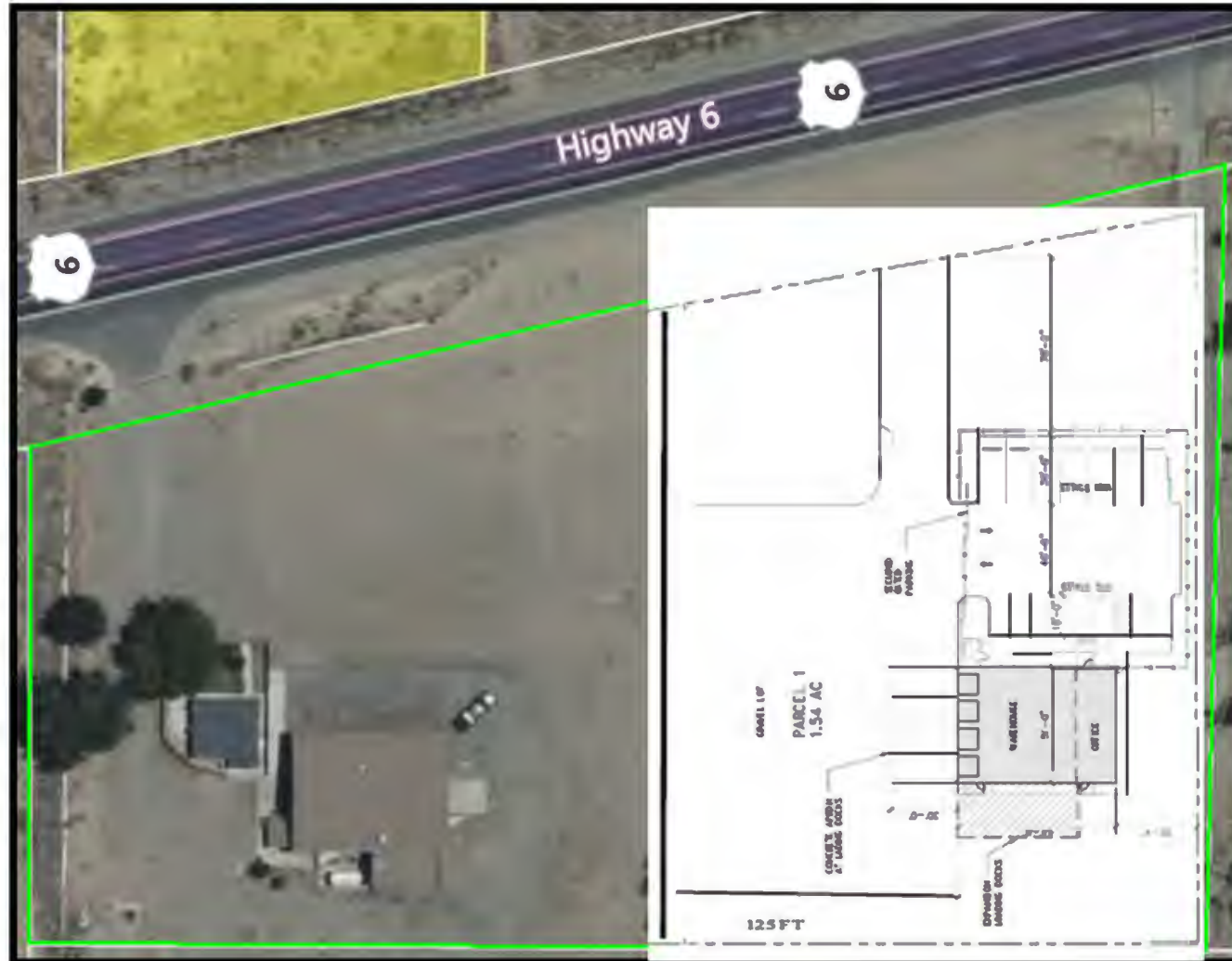




**Option 1 Site Plan**

**GREGORY B. SAAD, CCIM**  
**SAAD REALTY PARTNERS, LLC**  
**SAAD DEVELOPMENT CORPORATION**  
3601 SPRING HILL BUSINESS PARK, SUITE 200  
MOBILE, ALABAMA 36608 | [WWW.SAAD.COM](http://WWW.SAAD.COM) | [GREGSAAD@SAAD.COM](mailto:GREGSAAD@SAAD.COM)  
D: 251.964.8900 | C: 251.709.0330 | P: 251.478.7223





**Option 2 Site Plan**

