

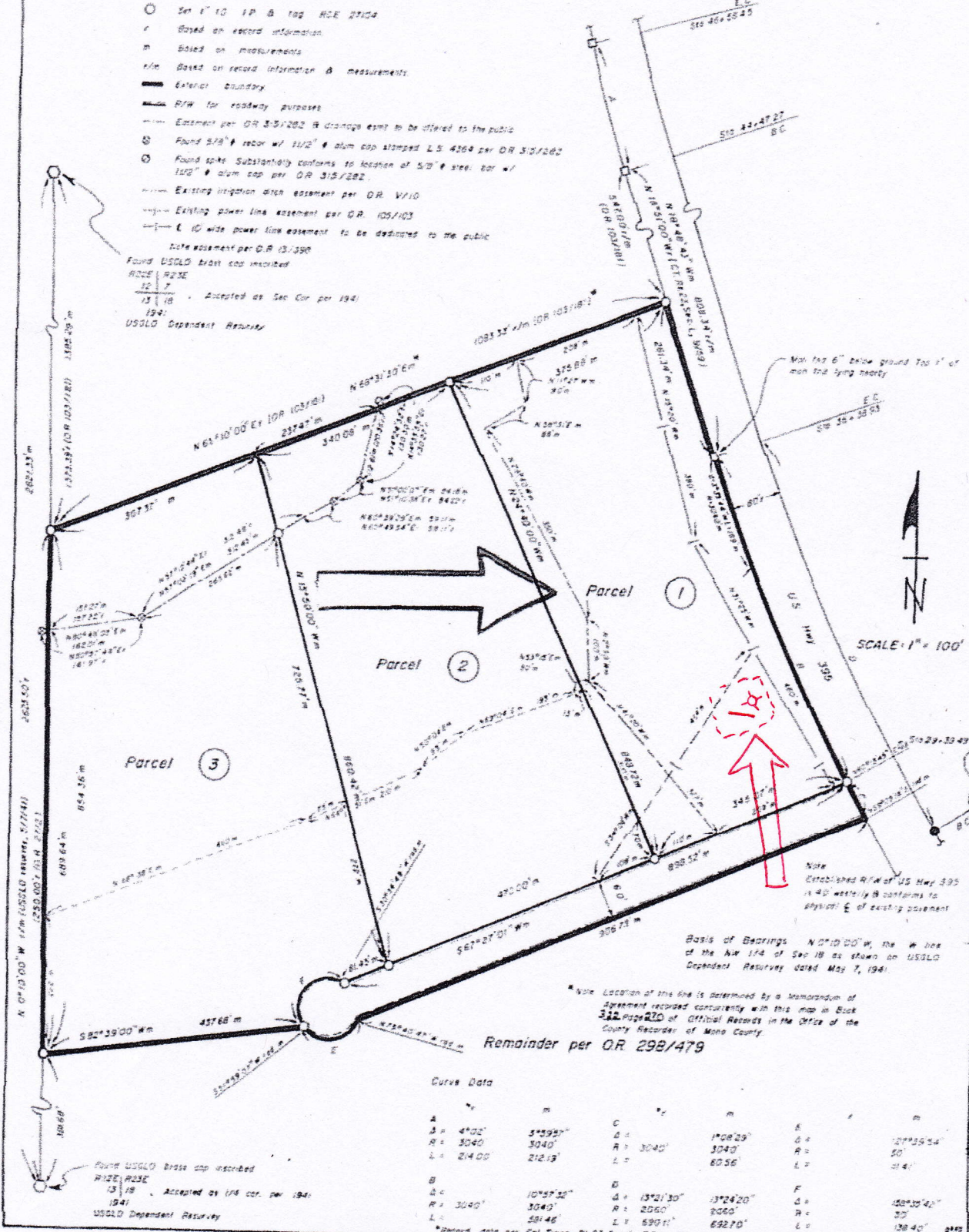
# PARCEL MAP NO. 31-47

SHEET 2 OF 2

A DIVISION OF A PORTION OF THE NW1/4 OF SEC 18, T8N, R23E, MBDBM, MONO COUNTY, CALIFORNIA

- LEGEND**
- 10' wide drainage easement to be offered to the public.
  - Found Cal Trans 6"x6" conc. key man
  - Found 1/2" x rubber painted orange. Apparently set of BC per PMS 1/72
  - Set 1" x 10' IP & tag RCE 2/104
  - ~ Based on record information.
  - m Based on measurements.
  - ~m Based on record information & measurements.
  - ▬ Exterior boundary.
  - ▬ R/W for roadway purposes.
  - Easement per OR 3-5/282. A drainage easement to be offered to the public.
  - ⊙ Found 3/8" x rebar w/ 1 1/2" x alum cap stamped L.S. 4264 per OR 3-5/282
  - ⊙ Found spike. Substantially conforms to location of 5/8" x steel bar w/ 1 1/2" x alum cap per OR 3-5/282.
  - Existing irrigation ditch easement per OR VP10
  - Existing power line easement per OR 105/103
  - 10' wide power line easement to be dedicated to the public.
  - Easement per OR 15/390
  - Found USGLO brass cap inscribed  
R23E R23E  
12 7  
13 18  
1941. Accepted as Sec Cor per 1941
  - 1941  
USGLO Dependent Reserve

This is not a survey of the land, but is for information only, nor is it a part of the report or policy to which it may be attached.



**Curve Data**

A	B	C	D	E
Δ = 4°00'	Δ = 5°39.57"	Δ = 1°08'29"	Δ = 13°21'30"	Δ = 13°24'20"
R = 3040'	R = 3040'	R = 3040'	R = 2060'	R = 2060'
L = 214.00'	L = 212.19'	L = 80.56'	L = 690.11'	L = 692.70'
Δ = 3040'	Δ = 10°57'30"	Δ = 13°21'30"	Δ = 13°24'20"	Δ = 13°24'20"
R = 3040'	R = 3040'	R = 2060'	R = 2060'	R = 2060'
L = 214.00'	L = 212.19'	L = 80.56'	L = 690.11'	L = 692.70'

\* Record 2018 per Cal Trans R1.23 Sec L R/W map dated Sept, 1959

Found USGLO brass cap inscribed  
R23E R23E  
13 18  
1941. Accepted as 1/4 cor. per 1941  
USGLO Dependent Reserve

Basis of Bearings N 0° 10' 00" W, the W line of the NW 1/4 of Sec 18 as shown on USGLO Dependent Reserve dated May 7, 1941.

\* Note Location of this line is determined by a Memorandum of Agreement recorded concurrently with this map in Book 332 page 210 of Official Records in the Office of the County Recorder of Mono County.

Remainder per OR 298/479