

Bi-State Sage-Grouse

Update: Listings, Action Plan and Commitments

April 9, 2024 – Mono County Board of Supervisors



Endangered Species Act (ESA) Listings

Bi-State Distinct
Population Segment of
Greater sage-grouse
currently proposed for
listing under:

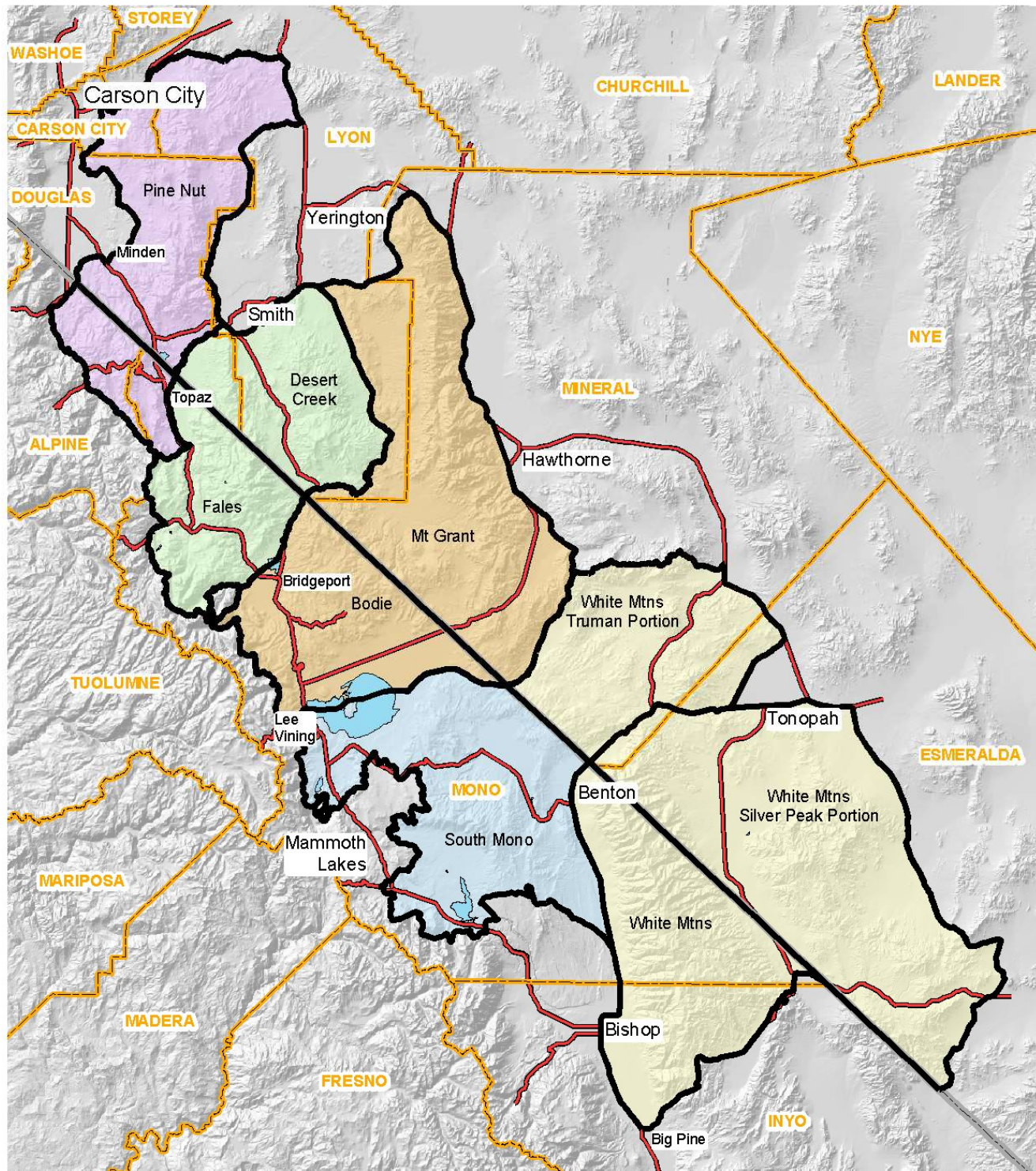
- California Endangered Species Act (CESA)
- Federal Endangered Species Act (ESA)





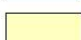
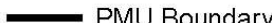
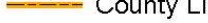
Bi-State Distinct Population Segment (DPS)

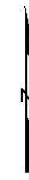
- Genetically unique population
- Straddles the California/Nevada Border
 - California: Inyo, Mono and Alpine counties
 - Nevada: Esmeralda, Mineral, Lyon, Douglas and Carson City
- Six Population Management Units (PMUs)
- Two largest (core) populations in Mono County
 - Bodie Hills (Bodie PMU)
 - Long Valley (South Mono PMU)





Sage Grouse PMUs

-  Pine Nut PMU
-  Desert Creek-Fales PMU
-  Bodie/Mount Grant PMUs
-  South Mono PMU
-  White Mountains PMU
-  PMU Boundary
-  County Line
-  State Line
-  Highways

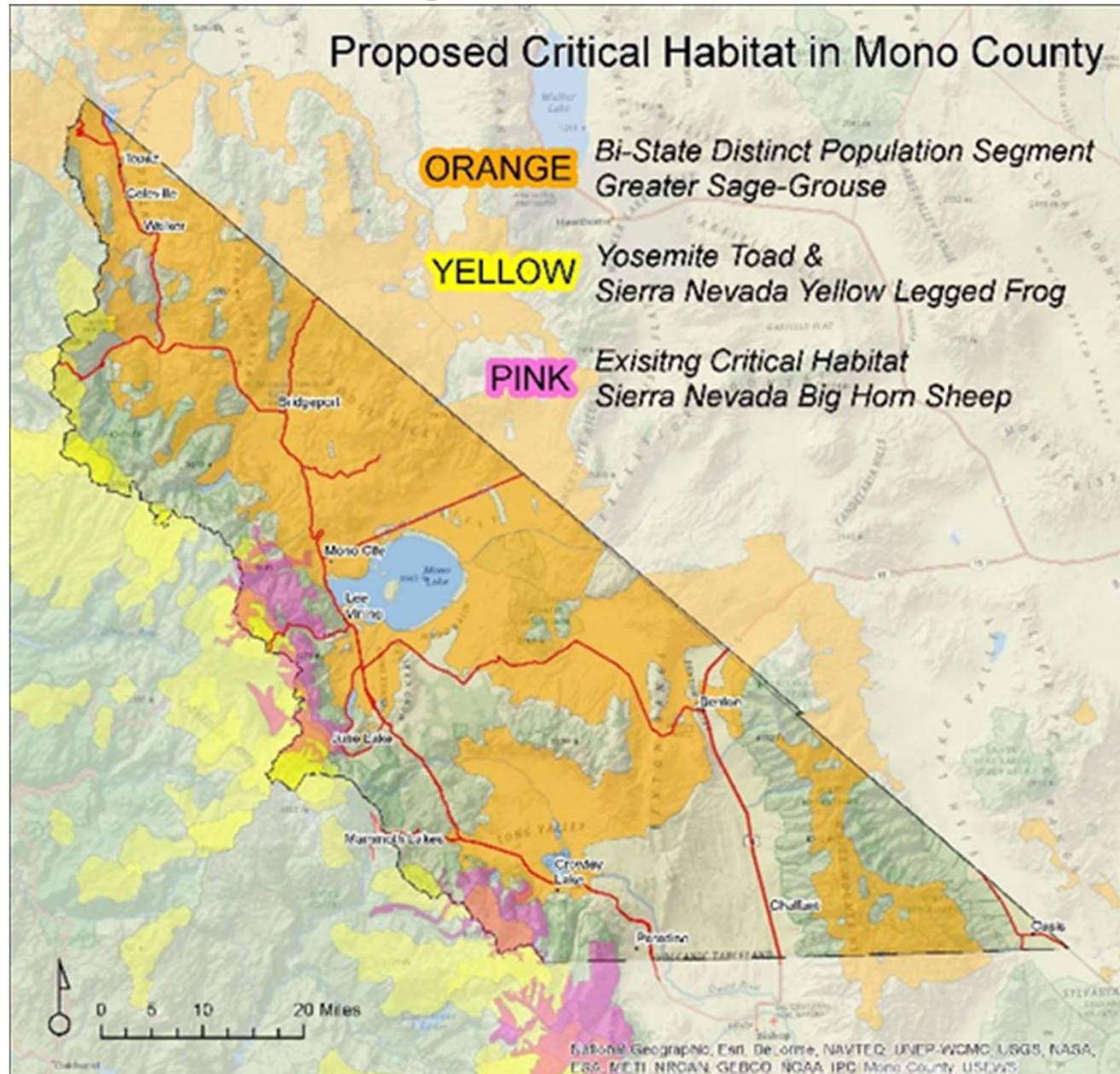


May, 2006



Vicinity Map

Federal ESA: Big Picture in Mono County



Partnership Organization

- Created in 2002 (CDFW, NDOW, BLM, USFS, NRCS, stakeholders)
- Local Area Working Group (LAWG): Includes all engaged stakeholders
- Tribal Natural Resources Committee: Facilitates communication between Tribes and agencies
- Technical Advisory Committee (TAC): Provides guidance to ensure the conservation strategy is adaptive and science-based
- Executive Oversight Committee (EOC): Ensures a coordinated interagency approach and commitment to implementation
- Conservation Plans: 2004, 2012 Bi-State Action Plan, 2024 update

“It’s time to build conservation partnerships between the federal government and state governments, local communities and private landowners. In all these efforts, we see the future of conservation.”

George W. Bush

Bi-State Wide Accomplishments

- Implemented ~90% of the 2012 Bi-State Action Plan
- Allocated at least \$45M in conservation funding
- Improved over 143,000 acres of habitat
- Ratio-marked and tracked over 1000 sage-grouse
- Partnered with USGS scientists to assess effectiveness



Conservation Action Effectiveness

USGS has evaluated the effectiveness of management practices including:

Conifer removal

Sage brush restoration

Meadow restoration

Fence modifications

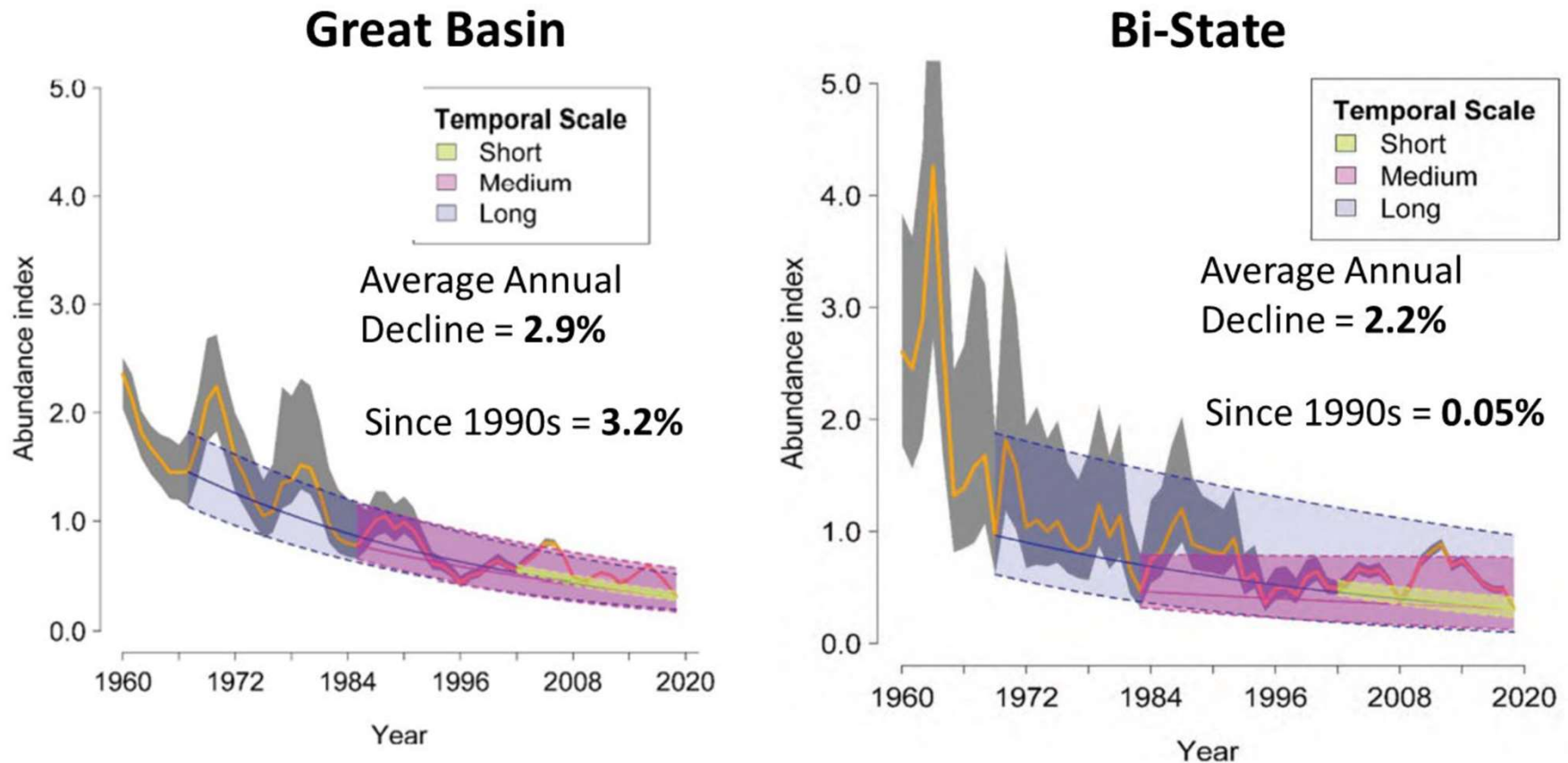
Road closures



Results

Increase in Bi-State sage-grouse population success since 2012 has halted declines and led to population stabilization.

(from draft study: not for citation or distribution)



Comment Letters

- Continue Mono County's commitment to Bi-State conservation effort.
- Listing is unnecessary and may be detrimental to the voluntary, collaborative conservation model.



Bodie Hills Conservation Partnership fence removal project (photos by Caara Fritz Hunter)