

Item available for public inspection in the Clerk's office during regular business hours (Monday - Friday, 9 AM - 5 PM)

February 21, 2023

Regular Meeting

Item #7C - 2023 Mono

County Capital

Improvement Plan (CIP)

(Regular Agenda)

Public Works

Presentation by Paul Roten



MONO COUNTY DEPARTMENT OF PUBLIC WORKS

POST OFFICE BOX 457 • 74 NORTH SCHOOL STREET • BRIDGEPORT, CALIFORNIA 93517
760.932.5440 • Fax 760.932.5441 • monopw@mono.ca.gov • www.monocounty.ca.gov

Date: February 21, 2023
To: Honorable Chair and Members of the Board of Supervisors
From: Paul Roten, Public Works Director
Subject: Capital Improvement Program

This memo provides a brief introduction to the process we plan to work with to develop and implement the Capital Improvement Program. Staff anticipates making a presentation about the information presented here, along with additional details on January 17, 2023. After presentation we will invite discussion and comment on the CIP for incorporation. With direction from the Board, we will take this CIP to the Planning Commission to verify conformance with the Strategic Plan. Upon their approval, we will then return to the board for adoption of the CIP. This approved CIP will be used for the development of the Mono County FY 2023-24 Budget.

Actions:

Please review and consider support for project items included in this draft Capital Improvement Program (CIP). Please work with attachment D, Blank Project Worksheet, to develop any new projects.

Discussion:

The Capital Improvement Program (CIP) is an important tool for the Mono County Board of Supervisors to prioritize and align County work and spending with the Mono County Strategic Plan and goals. This CIP affects numerous budgets. Each item that affects the budget will be brought to the Board as the projects move forward. The CIP also affects assignment of resources.

The last CIP was drafted and adopted in October 2018. Since that time there have been many changes in leadership. The new vision for the Mono County CIP is for a Policy and Process that ensures annual workshops and incorporation of projects into the Annual budget Process. In the future we plan to complete this process in early November each year for use in the development of the following years budget.

This CIP, as the first of Mono County's annual CIP's, will act as a baseline. It is mostly prepared based on our present funded projects.

Our goal of the annual CIP process is to allow the Mono County Board, the Planning Commission and members of the public to have a transparent look at ongoing needs and how Mono County intends to meet the interests of its residents and its visitors. The prioritization of CIP projects is based on Mono County Strategic Plan with direction from the Planning Commission and the Mono County Board.

The goal of this workshop is to facilitate conversation regarding:

- This revised process for the CIP management and funding
- Discussion Project categories and projects identified in 5-year Program Plan program and schedule, presentation of materials
- Direction on FY22/23 program Confirmation
- Direction on FY23/24 and beyond program Consensus on Master Facilities Planning
- Funding and Staffing
- Budget Process / Financial Plan Confirmation

Moving forward, we expect to have regular reviews of this CIP. We want to keep this tool simple and functional with opportunities for Board participation and decision making. Projects in this Capital Improvement will generally be those over \$25,000. In general, the CIP will include funded projects. But we do want to develop work sheets and keep our eyes on potential future projects that could affect future budgets.

This CIP is intended to be a working guideline to each of the identified departments and their respective projects. It is not intended to be a document lost in a drawer or a file. We will be keeping this document on the Public Works website updated to the latest approved level. Again, this is important as a matter of public transparency. We further expect to maintain this document as a matter of accountability, for departments to follow and perform to its identified goals.

The CIP does not include recurring costs for maintenance and operations, or other planned or unplanned repairs normally covered in the County's budget on an annual basis. Ongoing costs for routine maintenance and budgeted maintenance reserves, depreciation, etc. are included in various Department's operating budgets. We do though want to identify when a project could affect maintenance and operations costs. This should be noted on the various project sheets.

Attached are several items for consideration

1. Draft CIP
2. Appendix A – Projects List (All projects list)
3. Appendix B – NEW PROJECTS
4. Appendix C - COMPLETED PROJECTS

5. Appendix D – Blank Project worksheet (for preparation of new projects for consideration of inclusion in CIP)

Expected Workshop Results:

1. Obtain Board of Supervisors comment on the CIP
2. Discuss and comment on proposed project list with a focus on FY 2022-23 and FY 2023-24
3. Provide consensus on CIP work program and funding for FY 2022-23 and the following 5 years.
4. Direction to County staff on direction for corrections and development of CIP.

If you have questions regarding this item, please contact Paul Roten at 760-709-0427 (cellphone), or proten@mono.ca.gov

Respectfully submitted,



Paul Roten, Public Works Director



Draft
Mono County
Capital Improvement Plan
Fiscal Year 2022/2023

DRAFT



2022/2023 Mono County Capital Improvement Plan

Table of Contents

1. Introduction.....	1
2. Project Categories.....	2
3. Development of Capital Improvement Plan	3
4. Prior to and including 2022/2023 Project Completion Highlights.....	4
5. Funding Sources.....	5
6. 5 Year CIP	6
7. New Project Worksheet	7

Attachments

Appendix A.....	5 Year CIP Table
Appendix B.....	New Projects / Narratives
Appendix C.....	Completed Projects
Appendix D.....	Project Worksheet Form and Instructions

DRAFT

1. Introduction

The 5-year Capital Improvement Plan (CIP) for Mono County is the community's plan for short and mid-range development, maintenance, improvement and acquisition of infrastructure assets to benefit the County's residents, businesses, property owners and visitors. The CIP provides a linkage between the County's General Plan, various master planning documents and the annual budget to more effectively plan, prioritize, schedule and implement capital and projects over the next 5-year period (through FY 2027/28).

The Capital Improvement Plan is vital to our County. It is a plan for physical improvements to public facilities and infrastructure, throughout Mono County. The underlying motive behind these programs is to improve safety, mobility, and lifestyles of residents and visitors. Such projects will have a positive effect on the local economy and include short-range and long-range capital acquisition and development plans and projects. Projects included in the CIP are major non-recurring projects, have a long service life, and will be underway (or are planned, but are unfunded) during the 5-year cycle beginning with fiscal year (FY) 2022/23 and ending FY 2026/27. CIP expenditures are considered beyond the scope of normal annual operating or maintenance expenses.

This CIP is proposed to be reviewed annually and revised as necessary based on current circumstances and opportunities in consideration of historic requirements and expenditures for capital projects. While the 5-Year Plan does not appropriate funds, it serves as a planning and budget tool to identify needed capital projects, estimate capital requirements, and coordinate financing and timing. It identifies projects for annual funding, focuses resources in program areas, and supports planning recommendations. It also identifies project

impacts on future operating budgets, including additional staffing, maintenance, and other recurring operational expenditures that require ongoing funding and must be considered in the planning and approval of projects.

The plan is dynamic in nature and changes year to year as priorities, needs and funding change. The CIP is a guide for the consideration, selection and development of; roads, sewers, water systems, bike lanes, sidewalks, MUP's, parking, parks, airports, offices and other types of facilities necessary to provide communities with services. The projects include significant maintenance and replacement of existing infrastructure and facilities and construction of new facilities and infrastructure.

Ultimately, the CIP is focused on achieving the following goals:

- Develop a consistent annual process to coordinate the planning and development of infrastructure and facilities.
- Enhance coordination and communication among County departments and other entities involved in the development of capital projects.
- Increase the alignment between infrastructure and facilities projects and adopted land use plans and policies.
- Provide an opportunity for the Board of Supervisors to align the CIP with Strategic Priorities
- Increase opportunities to identify and align funding sources necessary for the development of improvements.
- Increase awareness of planned capital projects to the public and community partners.



2. Project Categories

The CIP and associated documents have been divided into the following categories to help organize and prioritize projects.

AC – Auditor Controller – includes operational software for mono county financial management.

AS – Animal Services – includes buildings and operations to manage shelter animals.

BH – Behavioral Health

CH - Community Housing. Includes capital projects that advance the County’s housing goals, including Affordable Housing and Other Community Housing Opportunities

EO - Elections Office. Includes elections equipment and operations.

EMS – Emergency Medical Services. – Includes equipment and facilities for EMS to provide services, such as ambulances and

IT - Information technologies and Systems. – This category all operations equipment required by the IT department.

PB - PROBATION. Mono County Probation. This includes necessary purchases and large projects required by the Probation department.

PW/AP - Public Works / Airport. Mono County owns and operates two airports. “Bryant Field Airport” is located in Bridgeport and includes the runway, an apron and a tie down area. “Lee Vining Airport” is located a half mile east of 395 1 mile south of Lee Vining and includes a runway, an apron, and a couple hangars and a tie down area.

PW/FE – Public Works / Fleet and Equipment– Mono County owns about 250 vehicles. Approximately half of them are used by Public Works

PW/GF – Public Works / General Facilities. The category includes the 99 County owned vertical structures. This includes 5 municipal corporation yards, the Civic Center, the Courthouse in Bridgeport, the Bridgeport Jail, 5 community centers, etc.

PW/PR – Public Works / Parks, Recreation and Land. Mono County also has numerous parks around the county with facilities like tennis courts, horseshoe pits, picnic tables, etc. The category includes the campground located at Lundy Lake,

undeveloped Mono County Land and Conway and xx. Cemetery work is also included in this category.

PW/SD – Public Works / Storm Drain Projects (SD). This category includes all drainage related facilities within the Mono County, including storm drains, culverts, inlets, and basins. It also includes any flood related projects.

PW/SOAR – Public Works / Sustainable Outdoors and Recreation. Mono County Sustainable Outdoors and Recreation – This category supports activities in the eastern sierra to maintain sustainability of our environment. This category will also work toward shared uses and facilities.

PW/SS – Public Works / Streetscape. Includes streets, street side landscaping, furniture, banners and decorations, and wayfinding signage.

PW/ST – Public Works / Streets County Right of Way ROW, Streets and Signage (SS). This category includes capital improvements within the 632 miles of public right-of-way in the County. The improvements may include reconstruction of roadways, bridges, new traffic signals or streetlights, and new curb and gutter. This category also includes any ancillary work that may occur in state owned ROW.

PW/SW – Public Works / Solid Waste. Mono County owns and operates the Pumice Valley Landfill and Transfer station, the Walker Landfill and transfer station along with 4 transfer stations located at Bridgeport, Benton, Chalfant, and Paradise.

SO – Sheriff’s Office. Mono County owns the Sheriff’s Office and the Bridgeport Jail. Regular maintenance and improvements are the responsibility Mono County. This category includes the New Adult Detention Facility being built in Bridgeport with management by the Public Works Department. The maintenance of the SO fleet is managed under Fleet and Equipment.

SS – Social Services. Includes child services and First Five.



3. Development of the Capital Improvement Plan

The CIP process will be regularly refined to ensure realistic project planning that support the priorities of the County. Consistent with prior years, projects were reviewed as the previous cycle ended. The Public Works Department worked with County Departments to develop a list of new and current projects, obtain estimates, and determine potential impacts to the operating budget for the next five years. The list of projects is based on approved planning documents such as the General Plan and direction from the Board of Supervisors and input from Staff. The procedures for developing the 5-year CIP aim to enhance the County’s forecasting, project evaluation and community engagement processes by creating a resource “toolbox” to be used throughout the decision-making process. It is not intended to limit the County’s ability to adjust its programs, services and planned projects as unexpected needs, funding opportunities, or impacts arise. Upon approval of the CIP by the Board of Supervisors

the document should be aligned with the budget as CIP priorities should be reflected in budget decisions.

General CIP Acceptance Process

- New project identification / Update current/future CIP project details.
- Draft CIP – Align recommendations with strategic planning, Mono County needs, and available resources.
- Review projects with Board, solicit input and make edits.
- The Mono County Board of Supervisors accepts CIP, Staff makes budget adjustments as directed.
- Review CIP as needed, to allow for allocation of funds to support projects for the following year, adjust project scopes and budgets as required.



4. 2021 through FY2022-23 Project Completion Highlights

Airport Road Rehab

Road rehabilitation and addition of paved bike lanes on Airport Road (1.3 miles) and Hot Creek Hatchery Road (0.3 miles) providing direct access to Mammoth-Yosemite Airport from Highway 3.95.

Long Valley Streets

Road rehabilitation of Substation Road and select roads in Crowley Lake, Sunny Slopes, and Swall Meadows. The project rehabilitated 5 miles of county-maintained roads and the Lakeridge Ranch Zone of Benefit roads in Crowley Lake

Rock Creek Road Pavement Preservation

Slurry

Rock Creek Road Drainage Repair

Repair of a pavement deformity on Rock Creek Road caused by spring runoff.

June Lake Traffic Calming

Installation of Visual traffic calming devices, Speed Limit Signs and Feedback signs in the community of the June Lake Village.

Convict Lake Road Pavement Preservation

Slurry

2022 Mono County Public Works Standards

Update and Development of standards for Public Works, to replace the previous standards dated 1982.

Closing of the Benton Crossing Landfill

This process includes expansion of services at the Pumice Valley Landfill and Transfer Station



5. Funding Sources

Active Transportation Program	ATP
California Disaster Assistance Act	CDA
Certificates of Participation	COPs
County Fine Fund	CFF
Community Corrections Partnership	CCP
Federal Lands Access Program	FLAP
General Fund	GF
Highway Bridge Program	HBP
Highway Infrastructure Program	HIP
Highway Safety Improvement Program	HSIP
Jail Revenue Bonds	JRB

Mono County Local Transportation Commission Overall Work Program	LTC OWP
Motor Pool	MP
Regional Surface Transportation Program	RSTP
Researching for Funding Sources	RFFS
Road Maintenance and Rehabilitation Account (part of SB 1)	RMRA
State Revenue Bonds for Jail Construction	SB 844
State Transportation Improvement Program	STIP
Systemic Safety Analysis Report Program	SSARP
The Road Repair and Accountability Act (see RMRA)	SB 1
Zone of Benefit	ZOB



6. 5 Year CIP

The CIP outlook is intended to be a planning tool to assist in budget projections and decisions and to aid in the allocation of resources needed to meet Mono County’s strategic goals. Assessment of the CIP Outlook allows the Mono County to annually monitor and evaluate funding availability while taking into account new needs that are of priority. The CIP outlook provides the Board of Supervisors, key stakeholders, and the public with information prior to the budget meetings to facilitate an informed discussion during the development of the FY CIP Budget. One of the goals of the CIP outlook is to take a closer look at the funding gaps and identify any opportunities to appropriate discretionary funds. The budget outlook takes a closer look at the funding sources of each project, identifying the known source of funding for each project along with any deficiencies. This will be valuable when evaluating any budget surplus identified during the third quarter budget adjustment and appropriating funds to projects for development during the next summer or Fiscal Year.

DRAFT



Draft
Mono County
Capital Improvement Plan
Fiscal Year 2022/2023

APPENDIX A
CIP TABLE

DRAFT

Table A - Mono County - CIP - (in thousands)

		Funding source	FY2022-23 FY2027-28 Investment	Current FY2022-23	FY2023-24	FY2024-25	FY2025-26	FY2026-27	FY2027-28	FUTURE programming
AC - Auditor Controller	AP Total:		\$ -	\$ -	\$ -	\$ -	\$ -	\$ -		
	1	Financial Management Software	\$ -							\$ 1,000
CH - Community Housing	AH Total:		\$ 3,500	\$ 2,500	\$ 1,000	\$ -	\$ -	\$ -		\$ -
	1	Equity Investments	ARPA	\$ -						
	2	Deed Restrictions	ARPA	\$ -						
	3	Multifamily Development/Partnerships	ARPA	\$ -						
	4	ADU Support	ARPA	\$ -						
	5	Acquisition/Requisitions of naturally occurring affordable housing	ARPA	\$ -						
	6	Homelessness Solutions	ARPA	\$ -						
	7	General operating Support for housing orgs	ARPA	\$ -						
	8	Support Funding for Mammoth Shady Rest	SB1	\$ 2,000	\$ 1,000	\$ 1,000				
	9	MHSA Integrity Housing Project / The Parcel	MHSA	\$ 1,500	\$ 1,500					
EMS	AP Total:		\$ -	\$ -	\$ -	\$ -	\$ -	\$ -		
	1	Heart Monitors								\$ 250
IT - Information Technology	MS Total:		\$ 186	\$ 186	\$ -	\$ -	\$ -	\$ -		
		Emergency Communications System	\$ 91	\$ 91						
		CRISS Radio Systems	\$ 35	\$ 35						
		General Radio Maintenance	\$ 25	\$ 25						
		Moutaintop Radio Maintenance	\$ 35	\$ 35						

Table A - Mono County - CIP - (in thousands)

		Funding source	FY2022-23 FY2027-28 Investment	Current FY2022-23	FY2023-24	FY2024-25	FY2025-26	FY2026-27	FY2027-28	FUTURE programming
AP Total:			\$ 360	\$ 20	\$ 140	\$ 200	\$ -	\$ -		
PW - PUBLIC WORKS AP - Airport	1	LV Pavement Repars	\$ 50		\$ 50					
	2	BP Rotating Beacon	\$ 15	\$ 15						
	3	BP PAPI	\$ 30		\$ 30					
	4	BP Runway Edge	\$ 5	\$ 5						
	5	BP Fuel System	\$ 60		\$ 60					
	6	LV Pavement preservation	AIP	\$ 100			\$ 100			
	7	BP Pavement Preservation	AIP	\$ 100			\$ 100			
FE Total:			\$ 10,155	\$ 1,175	\$ 2,805	\$ 2,625	\$ 2,025	\$ 1,900		\$ 17,775
PW - PUBLIC WORKS FE - Fleet and Equipment	1	Backhoe	\$ -							\$ 500
	2	Compactor	\$ 900			\$ 900				\$ 750
	3	Dump Trucks x 10 (250k)	\$ 1,250			\$ 250	\$ 500	\$ 500		\$ 3,750
	4	Graders	\$ 2,625	\$ 375	\$ 375	\$ 750	\$ 375	\$ 750		\$ 4,875
	5	Loader (950)				\$ 375				
	6	Loader (966)	\$ 2,475	\$ 375	\$ 1,300		\$ 425	\$ 375		\$ 4,875
	7	Service Trucks	\$ 500	\$ 250		\$ 250				\$ 500
	8	Skid Steers	\$ 200			\$ 100		\$ 100		\$ 400
	9	Snow Blower (for 950)	\$ 520		\$ 260		\$ 260			\$ 1,250
	10	Snow Blower (for 966)	\$ 1,160		\$ 870		\$ 290			
	11	Water Truck	\$ 525	\$ 175			\$ 175	\$ 175		\$ 875

Table A - Mono County - CIP - (in thousands)

		Funding source	FY2022-23 FY2027-28 Investment	Current FY2022-23	FY2023-24	FY2024-25	FY2025-26	FY2026-27	FY2027-28	FUTURE programming
GF Total:			\$ 2,868	\$ 664	\$ 996	\$ 528	\$ 500	\$ 180		
PW - PUBLIC WORKS GF - General Facilities	1	ANX 1 Rehabilitation	? CIP \$ 140			\$ 70	\$ 70			
	2	ANX 2 HVAC Repairs	? CIP \$ 160	\$ 160						
	3	Behavioural Health Housing	? \$ -							
	4	Bridgeport Boat Ramp Rest Room Rehab	? CIP / 68 \$ 27	\$ 27						
	6	Civic Center - covered parking	\$ -							\$ 200
	7	Civic Center - Snow Rails	Civic \$ 8	\$ 8						
	8	Courthouse Painting	Court Fund \$ 220	\$ 220						
		courthouse State / Mammoth Lakes solar skyway	\$ 500		\$ 500					
	9	CSA 1 Radio Infrastructure Relocate	CSA1 \$ 8		\$ 8					
	10	CSA 2 Demo Milner Site	CSA2 \$ -							
		Deferred facility maintenance	\$ 500	\$ 100	\$ 100	\$ 100	\$ 100	\$ 100		\$ 100
		EV Charging Stations	FED ev \$ 750		\$ 250	\$ 250	\$ 250			
	11	June Lake - Museum	JLHS / 3140 \$ 6	\$ 6						
	12	June Lake CC/Thrift Store (Interior Paint / Windows)	Fac-3140 \$ 32		\$ 32					
	13	Memorial hall Solar	PSPS Grant \$ 55	\$ 55						
	14	Paint Schedule All County Facilities	Fac-3140 \$ 400	\$ 80	\$ 80	\$ 80	\$ 80	\$ 80		
	15	Paint/reside Whitmore animal shelter	Fac-3140 \$ 26		\$ 26					
16	Sheriff Admin Accessible Path of Travel	? CDBG \$ 28			\$ 28					
17	Sheriff Admin Office / Wall Adjust.	? \$ 8	\$ 8							

Table A - Mono County - CIP - (in thousands)

		Funding source	FY2022-23 FY2027-28 Investment	Current FY2022-23	FY2023-24	FY2024-25	FY2025-26	FY2026-27	FY2027-28	FUTURE programming	
PW - PUBLIC WORKS	PR Total:		\$ 600	\$ 600	\$ -	\$ -	\$ -	\$ -			
	1	Bridgeport Banner	\$ 200	\$ 200							
	2	CSA 1 - shade structure	\$ -								
	3	MUSD - Volleyball courts	\$ -								
	4	CSA 1 - tennis court crowley	\$ -								
	5	Prop 68 - Bridgeport	\$ 80	\$ 80							
	6	Prop 68 - Walker	\$ 80	\$ 80							
	7	Prop 68 - Lee Vining	\$ 240	\$ 240							
	9	Gull EV Charger	\$ -								
	10	Hess Park Solar Pavillion	\$ -								
	12	install 10,000 gallon water storage tanks	\$ -								
	13	Bridgeport Cemetary Arch	\$ -								
	14	CLCC Pergola	\$ -								
	15	Walker Campus 3/ North Tennis Court	\$ -								
	PW -SD - Storm Drain	SD Total:		\$ -	\$ -	\$ -	\$ -	\$ -	\$ -		
				\$ -							

Table A - Mono County - CIP - (in thousands)

		Funding source	FY2022-23 FY2027-28 Investment	Current FY2022-23	FY2023-24	FY2024-25	FY2025-26	FY2026-27	FY2027-28	FUTURE programming	
PW - SOAR	MS Total:		\$ -	\$ -	\$ -	\$ -	\$ -	\$ -			
PW - PUBLIC WORKS SW - Solid Waste	SW Total:		\$ 8,580	\$ 475	\$ 1,175	\$ 3,400	\$ 3,400	\$ 130		\$ 5,320	
		Benton Crossing Landfill Closure	ENT	\$ 6,980		\$ 50	\$ 3,400	\$ 3,400	\$ 130		\$ 3,770
		Compactor x 1 (45k annual for		\$ 750		\$ 750					
		Generators	ENT	\$ 25	\$ 25						
		Hazardous Material Cover	ENT	\$ 150	\$ 150						
		Material Bays	ENT	\$ 25	\$ 25						
		Scale House	ENT	\$ 250	\$ 250						
		Stormwater Diversion	ENT	\$ 375		\$ 375					
		Trommel (state order to make compost)		\$ -							\$ 250
		Water Tank	ENT	\$ 25	\$ 25						
	Wood Chipper		\$ -							\$ 1,300	
SO - Sheriff's Office	MS Total:		\$ 34,000	\$ 1,000	\$ 8,000	\$ 20,000	\$ 5,000	\$ -			
	5	Bridgeport Jail	BSCC	\$ 25,000		\$ 3,000	\$ 20,000	\$ 2,000			
			Loan	\$ 7,000	\$ 1,000	\$ 5,000		\$ 1,000			
			GF	\$ 2,000				\$ 2,000			
SS - Social Services	AP Total:		\$ -	\$ -	\$ -	\$ -	\$ -	\$ -			
	1	Modular Child Care Facility, Walker		\$ -						\$ 520	



Draft
Mono County
Capital Improvement Plan
Fiscal Year 2022/2023

APPENDIX B
NEW PROJECT
WORKSHEETS

DRAFT



2022/2023 Mono County - Capital Improvement Plan

NEW PROJECTS

AUDITOR CONTROLLER.....	AC
BEHAVIOURAL HEALTH	BH
COMMUNITY HOUSING	CH
EMERGENCY MEDICAL SERVICES	EMS
ELECTIONS OFFICE	EO
INFORMATION TECHNOLOGIES.....	IT
PROBATION.....	PB
PUBLIC WORKS	
AIRPORTS.....	PW/AP
FLEET.....	PW/FE
GENERAL FACILITIES	PW/GF
PARKS, RECREATION AND LANDS.....	PW/PR
STREETS.....	PW/ST
SUSTAINABLE OUTDOORS AND RECREATION	PW/SOAR
SOLID WASTE	PW/SW
SHERIFF'S OFFICE	SO
SOCIAL SERVICES	SS

DRAFT



Project No	Department	Map / Picture
Project Name		
Description		

(Dollars in thousands)									
s c h e d u l e	Funding Source	Total	Thru FY 2022/23	FY 2022/23	FY2023/24	FY2024/25	FY2025/26	FY2026/27	After FY 2026/27

Notes

(see Notes for checked items)	
Board Direction required	Is Project funded
CSA/RPAC/Planning support	CEQA/Environmental triggered
Are there project risks	Will project add continued costs
Contracts required	Are permits required



Project No	Department / Division	Map / Picture
Project Name		
Justification		
Description		

(Dollars in thousands)									
Schedule	Funding Source	Total	Thru FY 2022/23	FY 2023/24	FY2024/25	FY2025/26	FY2026/27	FY2027/28	After FY 2027/28

Notes

(see Notes for checked items)	
<input type="checkbox"/> Board Direction required	<input type="checkbox"/> Is Project funded
<input type="checkbox"/> CSA/PPAC/Planning support	<input type="checkbox"/> CEQA/Environmental triggered
<input type="checkbox"/> Are there project risks	<input type="checkbox"/> Will project add continued costs
<input type="checkbox"/> Contracts required	<input type="checkbox"/> Are permits required



Project No	Department / Division	Map / Picture
Project Name		
Justification		
Description		

(Dollars in thousands)									
Schedule	Funding Source	Total	Thru FY 2022/23	FY 2023/24	FY2024/25	FY2025/26	FY2026/27	FY2027/28	After FY 2027/28

Notes

(see Notes for checked items)	
<input type="checkbox"/> Board Direction required	<input type="checkbox"/> Is Project funded
<input type="checkbox"/> CSA/JPAC/Planning support	<input type="checkbox"/> CEQA/Environmental triggered
<input type="checkbox"/> Are there project risks	<input type="checkbox"/> Will project add continued costs
<input type="checkbox"/> Contracts required	<input type="checkbox"/> Are permits required



Project No	Department / Division	Map / Picture
Project Name		
Justification		
Description		

(Dollars in thousands)									
Schedule	Funding Source	Total	Thru FY 2022/23	FY 2023/24	FY2024/25	FY2025/26	FY2026/27	FY2027/28	After FY 2027/28

Notes

(see Notes for checked items)	
Board Direction required	Is Project funded
CSA/RPAC/Planning support	CEQA/Environmental triggered
Are there project risks	Will project add continued costs
Contracts required	Are permits required



Project No	Department / Division	Map / Picture
Project Name		
Justification		
Description		

(Dollars in thousands)									
Schedule	Funding Source	Total	Thru FY 2022/23	FY 2023/24	FY2024/25	FY2025/26	FY2026/27	FY2027/28	After FY 2027/28

Notes

(see Notes for checked items)	
<input type="checkbox"/> Board Direction required	<input type="checkbox"/> Is Project funded
<input type="checkbox"/> CSA/JPAC/Planning support	<input type="checkbox"/> CEQA/Environmental triggered
<input type="checkbox"/> Are there project risks	<input type="checkbox"/> Will project add continued costs
<input type="checkbox"/> Contracts required	<input type="checkbox"/> Are permits required



Project No	Department / Division
------------	-----------------------

Project Name

Description

Map / Picture

(Dollars in thousands)									
s c h e d u l e	Funding Source	Total	Thru FY 2022/23	FY 2023/24	FY2024/25	FY2025/26	FY2026/27	FY2027/28	After FY 2027/28

Notes

(see Notes for checked items)	
Board Direction required	Is Project funded
CSA/RPAC/Planning support	CEQA/Environmental triggered
Are there project risks	Will project add continued costs
Contracts required	Are permits required



Project No	Department / Division	Map / Picture
Project Name		
Justification		
Description		

(Dollars in thousands)									
Schedule	Funding Source	Total	Thru FY 2022/23	FY 2023/24	FY2024/25	FY2025/26	FY2026/27	FY2027/28	After FY 2027/28

Notes

(see Notes for checked items)	
<input type="checkbox"/> Board Direction required	<input type="checkbox"/> Is Project funded
<input type="checkbox"/> CSA/JPAC/Planning support	<input type="checkbox"/> CEQA/Environmental triggered
<input type="checkbox"/> Are there project risks	<input type="checkbox"/> Will project add continued costs
<input type="checkbox"/> Contracts required	<input type="checkbox"/> Are permits required

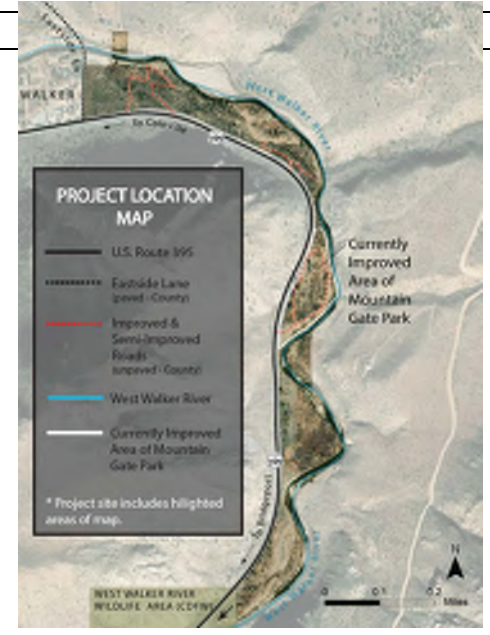


Mono County - Capital Improvement Plan - 2022/2023

PW/SOAR 1

Project No	Department
Project Name	
Justification	
Description	

Map / Picture



(Dollars in thousands)									
Schedule	Funding Source	Total	Thru FY 2022/23	FY 2022/23	FY2023/24	FY2024/25	FY2025/26	FY2026/27	After FY 2026/27

Notes

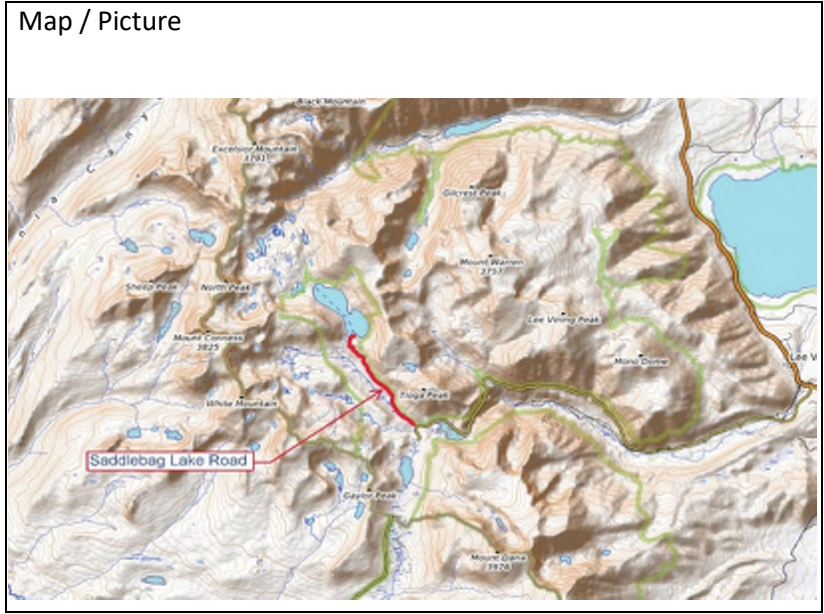
(see Notes for checked items)		
	Board Direction required	Is Project funded
	CSA/RPAC/Planning support	CEQA/Environmental triggered
	Are there project risks	Will project add continued costs
	Contracts required	Are permits required



Project No	Department / Division
------------	-----------------------

Project Name

Description



(Dollars in thousands)

Schedule	Funding Source	Total	Thru FY 2022/23	FY 2023/24	FY2024/25	FY2025/26	FY2026/27	FY2027/28	After FY 2027/28	

Notes

(see Notes for checked items)	
Board Direction required	Is Project funded
CSA/RPAC/Planning support	CEQA/Environmental triggered
Are there project risks	Will project add continued costs
Contracts required	Are permits required



Project No	Department / Division
------------	-----------------------

Project Name

Description



(Dollars in thousands)

s c h e d u l e	Funding Source	Total	Thru FY 2022/23	FY 2023/24	FY2024/25	FY2025/26	FY2026/27	FY2027/28	After FY 2027/28

Notes

(see Notes for checked items)	
Board Direction required	Is Project funded
CSA/JPAC/Planning support	CEQA/Environmental triggered
Are there project risks	Will project add continued costs
Contracts required	Are permits required



Project No	Department / Division	Map / Picture
Project Name		
Justification		
Description		

(Dollars in thousands)									
Schedule	Funding Source	Total	Thru FY 2022/23	FY 2023/24	FY2024/25	FY2025/26	FY2026/27	FY2027/28	After FY 2027/28

Notes

(see Notes for checked items)		
	Board Direction required	Is Project funded
	CSA/RPAC/Planning support	CEQA/Environmental triggered
	Are there project risks	Will project add continued costs
	Contracts required	Are permits required



Project No	Department / Division
Project Name	
Justification	
Description	

Map / Picture	
---------------	---

(Dollars in thousands)									
Schedule	Funding Source	Total	Thru FY 2022/23	FY 2023/24	FY2024/25	FY2025/26	FY2026/27	FY2027/28	After FY 2027/28

Notes

(see Notes for checked items)	
Board Direction required	Is Project funded
CSA/RPAC/Planning support	CEQA/Environmental triggered
Are there project risks	Will project add continued costs
Contracts required	Are permits required



Project No	Department / Division
------------	-----------------------

Project Name

Justification

Description



(Dollars in thousands)

Schedule	Funding Source	Total	Thru FY 2022/23	FY 2023/24	FY2024/25	FY2025/26	FY2026/27	FY2027/28	After FY 2027/28

Notes

(see Notes for checked items)	
Board Direction required	Is Project funded
CSA/RPAC/Planning support	CEQA/Environmental triggered
Are there project risks	Will project add continued costs
Contracts required	Are permits required



Project No	Department / Division
------------	-----------------------

Project Name

Justification

Description

Map / Picture



(Dollars in thousands)									
Schedule	Funding Source	Total	Thru FY 2022/23	FY 2023/24	FY2024/25	FY2025/26	FY2026/27	FY2027/28	After FY 2027/28

Notes

(see Notes for checked items)	
Board Direction required	Is Project funded
CSA/RPAC/Planning support	CEQA/Environmental triggered
Are there project risks	Will project add continued costs
Contracts required	Are permits required



Project No	Department / Division	Map / Picture
Project Name		
Justification		
Description		

(Dollars in thousands)									
Schedule	Funding Source	Total	Thru FY 2022/23	FY 2023/24	FY2024/25	FY2025/26	FY2026/27	FY2027/28	After FY 2027/28

Notes

(see Notes for checked items)	
Board Direction required	Is Project funded
CSA/PPAC/Planning support	CEQA/Environmental triggered
Are there project risks	Will project add continued costs
Contracts required	Are permits required



Project No	Department / Division	Map / Picture
Project Name		
Justification		
Description		

(Dollars in thousands)									
Schedule	Funding Source	Total	Thru FY 2022/23	FY 2023/24	FY2024/25	FY2025/26	FY2026/27	FY2027/28	After FY 2027/28

Notes

(see Notes for checked items)	
Board Direction required	Is Project funded
CSA/PPAC/Planning support	CEQA/Environmental triggered
Are there project risks	Will project add continued costs
Contracts required	Are permits required



Draft
Mono County
Capital Improvement Plan
Fiscal Year 2022/2023
EXHIBIT C
EXISTING Project
Sheets

DRAFT



Draft
Mono County
Capital Improvement Plan
Fiscal Year 2022/2023
EXHIBIT D
CIP WORKSHEET
AND INSTRUCTIONS

DRAFT



Mono County - Capital Improvement Plan - 2022/2023

Project No	Department / Division	Map / Picture
Project Name		
Justification		
Description		

(Dollars in thousands)									
Schedule	Funding Source	Total	Thru FY 2022/23	FY 2023/24	FY2024/25	FY2025/26	FY2026/27	FY2027/28	After FY 2027/28

Notes

(see Notes for checked items)	
<input type="checkbox"/> Board Direction required	<input type="checkbox"/> Is Project funded
<input type="checkbox"/> CSA/JPAC/Planning support	<input type="checkbox"/> CEQA/Environmental triggered
<input type="checkbox"/> Are there project risks	<input type="checkbox"/> Will project add continued costs
<input type="checkbox"/> Contracts required	<input type="checkbox"/> Are permits required



Instructions

Mono County - Capital Improvement Plan - 2022/2023

Project No
to be filled in by
PW, leave blank

Departn enter your department and
any division information,
and/or main contact here

Map / Picture

Provide a map, maps, or
pictures here. This is not
intended to be a complete
map, and to support inclusion
in the CIP, please limit to this
space.

If no maps or picture
available, please just note
that, with where the project
is located

Project Name Provide a suggested Project
Name here

Justification Provide a brief justification
here

Description Provide a brief description
here, include enough details
to describe project but limit
to this space

(Dollars in thousands)

	Funding Source	Total	Thru FY 2022/23	FY 2023/24	FY2024/25	FY2025/26	FY2026/27	FY2027/28	After FY 2027/28
s c h e d u l e	Provide as much information as you have about funding and estimated work years here, if no funding yet available, please note approximate amounts in "after FY 2026/27, or in Notes. in that case, please also note what funding sources may become available under Notes.								

Notes

If you have any further notes,
this is the right place for
them

(see Notes for checked items)

<input type="checkbox"/> Board Directic	unded
<input type="checkbox"/> CSA/RPAC/Pla	ironmental triggered
<input type="checkbox"/> Are there proj	:t add continued costs
<input type="checkbox"/> Contracts required	Are permits required

Check appropriate boxes, and
provide notes about them to
the left



MONO COUNTY CAPITAL IMPROVEMENT PLAN

5 YEAR PLAN

BEGINNING YEAR 2023

BASED ON THE STRATEGIC PLAN GOALS

- Must conform to the general plan
- Designed to help the County meet its Strategic Plan Goals

GENERAL CONSIDERATIONS

- Moving forward, this Capital Improvement Plan is steered by the Board of Supervisors
- The Mono County Departments will use the CIP for direction in use of working time.
- Reviewed and updated annually or semi annually
- Include considerations of projects well past the 5 year horizon

INCORPORATE NEEDS FROM ACROSS THE COUNTY

- The CIP is for more than just Public Works
- It is also for
 - Auditor Controller programs.
 - Community Housing,
 - Emergency Services
 - Information Technologies,
 - Probation - Transitional Housing,
 - Sheriff's Office
 - Social Services - Childcare facilities,

AUDITOR CONTROLLER

- ERP System Implementation to replace Innoprise and other 3rd party software

EMERGENCY MEDICAL SERVICES

- Heart Monitors
- Ambulance
 - Purchases through public works fleet

INFORMATION TECHNOLOGIES

- Radio Systems
- Generators
- Computer Storage solutions
- Software solutions
- Lock systems

PROBATION

- Transitional Housing
 - Planned in Bridgeport adjacent to the probation offices.
 - Will require outside consultants
 - Likely will require engineering and project management for RFP and bid packages.

SHERIFF'S OFFICE

- New Jail in Bridgeport
 - This is the largest task that our County has in the works.
 - It requires involvement of:
 - Auditor Controller Department (finance)
 - Public Works Director
 - Public Works Engineering
 - Public Works Facilities

SOCIAL SERVICES

- Childcare facility in north county

PUBLIC WORKS

- Public Works department is typically tasked with implementation and has 6 divisions
 - Engineering (street and road improvements, and county engineering support)
 - Facilities
 - Fleet
 - Road Operations
 - Solid Waste
 - Sustainable Outdoors and Recreation

ENGINEERING STREETS

- Saddlebag Lake
- Benton Crossing Road
- Eastside Lane Phase 2

FACILITIES PROJECTS

- HVAC systems upgrades Annex II
- Cross County parking area improvements and repairs
- Cross County Painting
- Cross County Roofing

FLEET PROJECTS

- Fleet is working towards more sustainable goals, including
 - Replacement program
 - Mixing in lease vehicles for parts of the fleet
 - Getting rid of equipment that are up to 40 years old and have high maintenance costs
 - Coordinating efforts with Caltrans and TOML to reduce parts costs, etc.

ROAD OPERATIONS PROJECTS

- Equipment upgrades
 - To meet snow removal needs
 - Aged equipment updating
 - To meet CARB compliance needs

SOLID WASTE PROJECTS

- With Benton Crossing Landfill shut
- Pumice Valley Landfill has become the primary Landfill in Mono County
 - Upgrades are being made now that should expect a 40 year life, including
 - Scalehouse
 - Water tank
 - Generator
 - Hazmat cover

SUSTAINABLE OUTDOORS AND RECREATION

- The majority of Sustainable Outdoors and Recreation work is grant funded at this point.
 - Presently the program is being grown with an eye for available grant funding and partnerships with agencies such as USFS, BLM AND TOML.

COMPLETED PROJECTS

- Civic Center located in Mammoth Lakes
- Long Valley Streets
- Airport Road
- Eastside Lane first phase

Table A - Mono County - CIP - (in thousands)

		Funding source	FY2022-23 FY2027-28 Investment	Current FY2022-23	FY2023-24	FY2024-25	FY2025-26	FY2026-27	FY2027-28	FUTURE programming
AC - Auditor Controller	AP Total:		\$ -	\$ -	\$ -	\$ -	\$ -	\$ -		
	1	Financial Management Software	\$ -							\$ 1,000
CH - Community Housing	AH Total:		\$ 3,500	\$ 2,500	\$ 1,000	\$ -	\$ -	\$ -		\$ -
	1	Equity Investments	ARPA \$ -							
	2	Deed Restrictions	ARPA \$ -							
	3	Multifamily Development/Partnerships	ARPA \$ -							
	4	ADU Support	ARPA \$ -							
	5	Acquisition/Requisitions of naturally occurring affordable housing	ARPA \$ -							
	6	Homelessness Solutions	ARPA \$ -							
	7	General operating Support for housing orgs	ARPA \$ -							
	8	Support Funding for Mammoth Shady Rest	SB1 \$ 2,000	\$ 1,000	\$ 1,000					
	9	MHSA Integrity Housing Project / The Parcel	MHSA \$ 1,500	\$ 1,500						
EMS	AP Total:		\$ -	\$ -	\$ -	\$ -	\$ -	\$ -		
	1	Heart Monitors								\$ 250
IT - Information Technology	MS Total:		\$ 186	\$ 186	\$ -	\$ -	\$ -	\$ -		
		Emergency Communications System	\$ 91	\$ 91						
		CRISS Radio Systems	\$ 35	\$ 35						
		General Radio Maintenance	\$ 25	\$ 25						
		Moutaintop Radio Maintenance	\$ 35	\$ 35						

Table A - Mono County - CIP - (in thousands)

		Funding source	FY2022-23 FY2027-28 Investment	Current FY2022-23	FY2023-24	FY2024-25	FY2025-26	FY2026-27	FY2027-28	FUTURE programming
PW - PUBLIC WORKS AP - Airport		AP Total:	\$ 360	\$ 20	\$ 140	\$ 200	\$ -	\$ -		
	1	LV Pavement Repars	\$ 50		\$ 50					
	2	BP Rotating Beacon	\$ 15	\$ 15						
	3	BP PAPI	\$ 30		\$ 30					
	4	BP Runway Edge	\$ 5	\$ 5						
	5	BP Fuel System	\$ 60		\$ 60					
	6	LV Pavement preservation	AIP \$ 100			\$ 100				
	7	BP Pavement Preservation	AIP \$ 100			\$ 100				
PW - PUBLIC WORKS FE - Fleet and Equipment		FE Total:	\$ 9,325	\$ 750	\$ 3,400	\$ 2,250	\$ 2,025	\$ 2,025		\$ 17,775
	1	Backhoe	\$ 500					\$ 500		\$ 500
	2	Compactor	\$ 900			\$ 900				\$ 750
	3	Dump Trucks x 10 (250k)	\$ 1,250			\$ 250	\$ 500	\$ 500		\$ 3,750
	4	Graders	\$ 1,500	\$ 375		\$ 375	\$ 375	\$ 375		\$ 4,875
	5	Loader (950)		\$ 375	\$ 375	\$ 375				
	6	Loader (966)	\$ 2,200		\$ 1,400		\$ 425	\$ 375		\$ 4,875
	7	Service Trucks	\$ 500		\$ 250	\$ 250				\$ 500
	8	Skid Steers	\$ 200			\$ 100		\$ 100		\$ 400
	9	Snow Blower (for 950)	\$ 530		\$ 270		\$ 260			\$ 1,250
	10	Snow Blower (for 966)	\$ 1,220		\$ 930		\$ 290			
	11	Water Truck	\$ 525		\$ 175		\$ 175	\$ 175		\$ 875

Table A - Mono County - CIP - (in thousands)

		Funding source	FY2022-23 FY2027-28 Investment	Current FY2022-23	FY2023-24	FY2024-25	FY2025-26	FY2026-27	FY2027-28	FUTURE programming
GF Total:			\$ 2,868	\$ 664	\$ 996	\$ 528	\$ 500	\$ 180		
PW - PUBLIC WORKS GF - General Facilities	1	ANX 1 Rehabilitation	? CIP	\$ 140		\$ 70	\$ 70			
	2	ANX 2 HVAC Repairs	? CIP	\$ 160	\$ 160					
	3	Behavioural Health Housing	?	\$ -						
	4	Bridgeport Boat Ramp Rest Room Rehab	? CIP / 68	\$ 27	\$ 27					
	6	Civic Center - covered parking		\$ -						\$ 200
	7	Civic Center - Snow Rails	Civic	\$ 8	\$ 8					
	8	Courthouse Painting	Court Fund	\$ 220	\$ 220					
		courthouse State / Mammoth Lakes solar skyway		\$ 500		\$ 500				
	9	CSA 1 Radio Infrastructure Relocate	CSA1	\$ 8		\$ 8				
	10	CSA 2 Demo Milner Site	CSA2	\$ -						
		Deferred facility maintenance		\$ 500	\$ 100	\$ 100	\$ 100	\$ 100	\$ 100	\$ 100
		EV Charging Stations	FED ev	\$ 750		\$ 250	\$ 250	\$ 250		
	11	June Lake - Museum	JLHS / 3140	\$ 6	\$ 6					
	12	June Lake CC/Thrift Store (Interior Paint / Windows)	Fac-3140	\$ 32		\$ 32				
	13	Memorial hall Solar	PSPS Grant	\$ 55	\$ 55					
	14	Paint Schedule All County Facilities	Fac-3140	\$ 400	\$ 80	\$ 80	\$ 80	\$ 80	\$ 80	
	15	Paint/reside Whitmore animal shelter	Fac-3140	\$ 26		\$ 26				
16	Sheriff Admin Accessible Path of Travel	? CDBG	\$ 28			\$ 28				
17	Sheriff Admin Office / Wall Adjust.	?	\$ 8	\$ 8						

Table A - Mono County - CIP - (in thousands)

		Funding source	FY2022-23 FY2027-28 Investment	Current FY2022-23	FY2023-24	FY2024-25	FY2025-26	FY2026-27	FY2027-28	FUTURE programming		
PW - PUBLIC WORKS	PR - Parks, Recreation and Lands	PR Total:	\$ 600	\$ 600	\$ -	\$ -	\$ -	\$ -				
		1	Bridgeport Banner	\$ 200	\$ 200							
		2	CSA 1 - shade structure	\$ -								
		3	MUSD - Volleyball courts	\$ -								
		4	CSA 1 - tennis court crowley	\$ -								
		5	Prop 68 - Bridgeport	\$ 80	\$ 80							
		6	Prop 68 - Walker	\$ 80	\$ 80							
		7	Prop 68 - Lee Vining	\$ 240	\$ 240							
		9	Gull EV Charger	\$ -								
		10	Hess Park Solar Pavillion	\$ -								
		12	install 10,000 gallon water storage tanks	\$ -								
		13	Bridgeport Cemetary Arch	\$ -								
		14	CLCC Pergola	\$ -								
		15	Walker Campus 3/ North Tennis Court	\$ -								
		PW-SD - Storm Drain		SD Total:	\$ -	\$ -	\$ -	\$ -	\$ -	\$ -		
					\$ -							

Table A - Mono County - CIP - (in thousands)

		Funding source	FY2022-23 FY2027-28 Investment	Current FY2022-23	FY2023-24	FY2024-25	FY2025-26	FY2026-27	FY2027-28	FUTURE programming
PW - SOAR		MS Total:	\$ -	\$ -	\$ -	\$ -	\$ -	\$ -		
PW - PUBLIC WORKS SW - Solid Waste		SW Total:	\$ 8,580	\$ 475	\$ 1,175	\$ 3,400	\$ 3,400	\$ 130		\$ 5,320
		Benton Crossing Landfill Closure	ENT	\$ 6,980		\$ 50	\$ 3,400	\$ 3,400	\$ 130	\$ 3,770
		Compactor x 1 (45k annual for		\$ 750		\$ 750				
		Generators	ENT	\$ 25	\$ 25					
		Hazardous Material Cover	ENT	\$ 150	\$ 150					
		Material Bays	ENT	\$ 25	\$ 25					
		Scale House	ENT	\$ 250	\$ 250					
		Stormwater Diversion	ENT	\$ 375		\$ 375				
		Trommel (state order to make compost)		\$ -						\$ 250
	Water Tank	ENT	\$ 25	\$ 25						
	Wood Chipper		\$ -						\$ 1,300	
SO - Sheriff's Office		MS Total:	\$ 34,000	\$ 1,000	\$ 8,000	\$ 20,000	\$ 5,000	\$ -		
	5	Bridgeport Jail	BSCC	\$ 25,000		\$ 3,000	\$ 20,000	\$ 2,000		
			Loan	\$ 7,000	\$ 1,000	\$ 5,000		\$ 1,000		
			GF	\$ 2,000			\$ 2,000			
SS - Social Services		AP Total:	\$ -	\$ -	\$ -	\$ -	\$ -	\$ -		
	1	Modular Child Care Facility, Walker		\$ -						\$ 520