

May 28-29, 2019
Special Meeting
Item # 2a

Finance

Presentation / Public Health Pamphlet
/ EMS Budget

2019-2020 BUDGET WORKSHOP

*Board Members, Administration
& Departments*

Workshop Agenda

- Budget Overview and Introductory Comments
- Meet with Departments individually
 - Tuesday: CDD, IT, CAO, County Counsel, Finance, DSS, BHS, and Economic Development
 - Wednesday: PH, Clerk-Recorder, Animal Control, Assessor, PW, EMS, DA, Probation, Sheriff
- Concluding Remarks
- Next Steps

The **ELEPHANT** in the room is



Reliance on
Fund Balance
CARRYOVER
to finance
next year's
operations

STRATEGIC PRIORITY – Fiscal Resiliency

SUSTAINABILITY

- Ration resources
- Cut services and discretionary spending
- Furloughs, layoffs, freezes
- Defer spending

RESILIENCY

- Increase Resources
- Add services and capacity, increase discretionary spending
- Staff development
- Investment in assets

SURVIVE>>CONTINUOUS IMPROVEMENT

CHARACTERISTICS OF RESILIENCY

- Reduce reliance on GF subsidies
- Pay for new/expanded services with new revenues
- Address long-term liabilities (PENSION and OPEB)
- Establish and diversify adequate levels of reserves
- Don't use fund balance for core operations
- Prohibit unsustainable uses of fund balance

The ability to withstand acute shocks and chronic stress **WHILE** maintaining **AND** improving essential services **AND** recover quickly and effectively

“Reserves must be taken seriously by all managers and officials, so prohibiting unsustainable uses of fund balance emphasizes the preservation of fund balance as the means of rescue from crisis situations.”

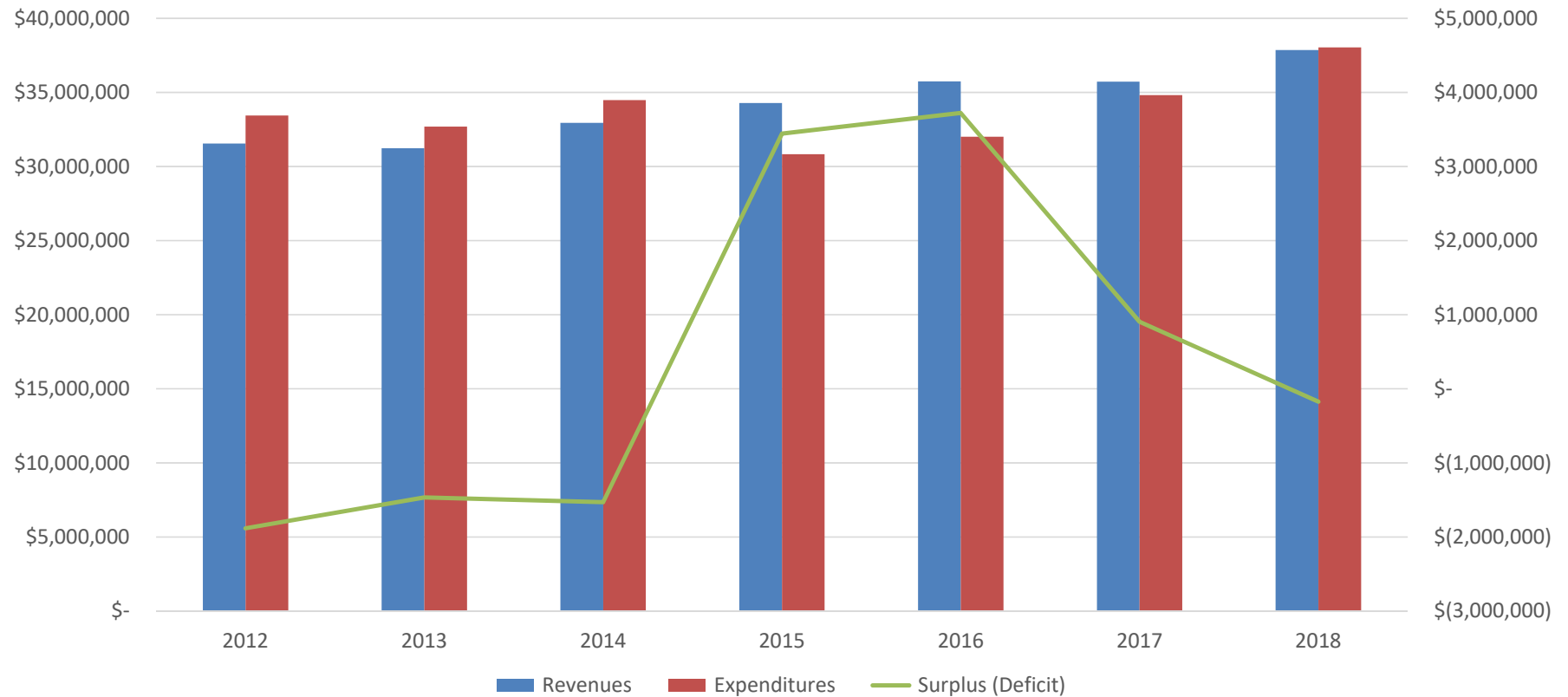
Quote from Shayne Kavanah, GFOA senior manager of research. “Building a Financially Resilient Government through Long-Term Financial Planning”

ADEQUATE RESERVES - *GFOA BEST PRACTICES*

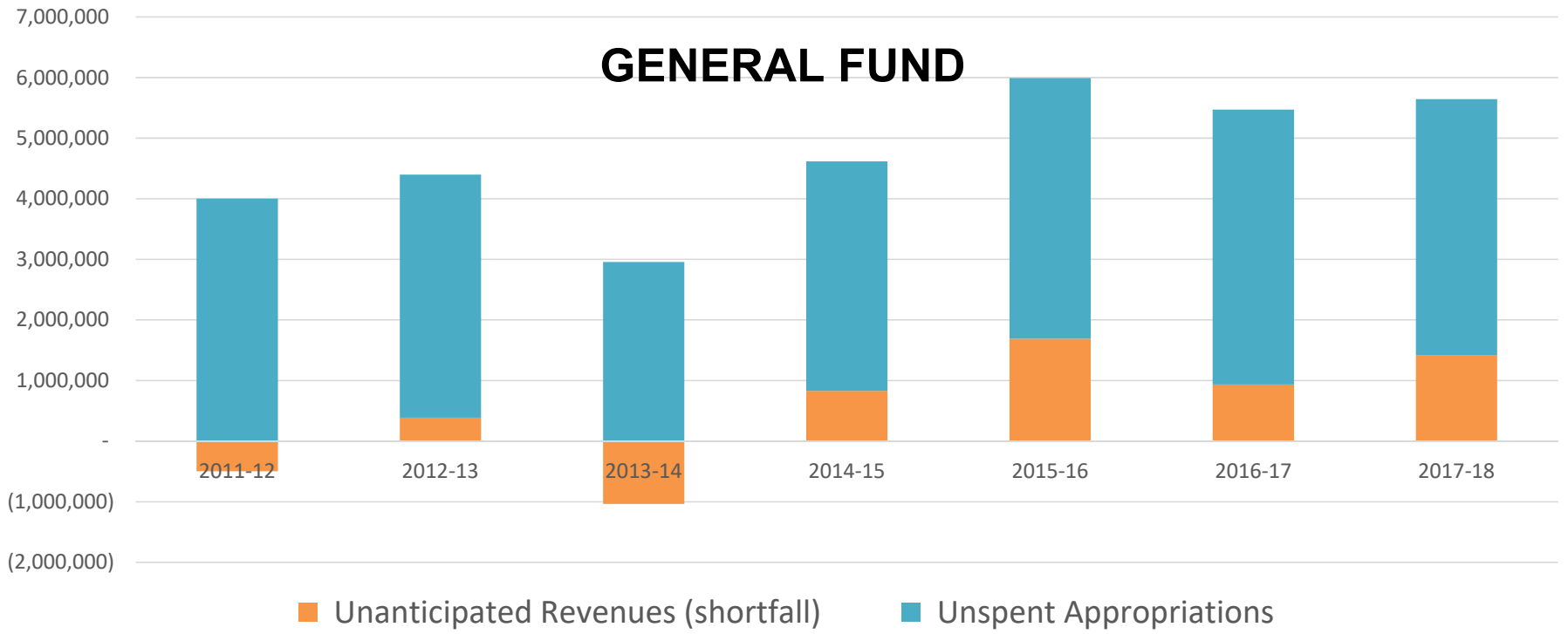
MINIMUM 2 MONTHS GF EXPENDITURES	\$6,700,000
ADEQUATE 3 MONTHS GF EXPENDITURES	\$10,000,000

CURRENT RESERVE BALANCES	EST JUNE 30, 2019
General Reserve	\$2,760,000
Economic Stabilization	2,860,000
Spendable Fund Balance	\$3,000,000
Total Reserves	\$8,620,000

GF FISCAL PERFORMANCE



Budgetary Perspective of Carryover Fund Balance



ALL COMPONENTS OF GF CARRYOVER BALANCE

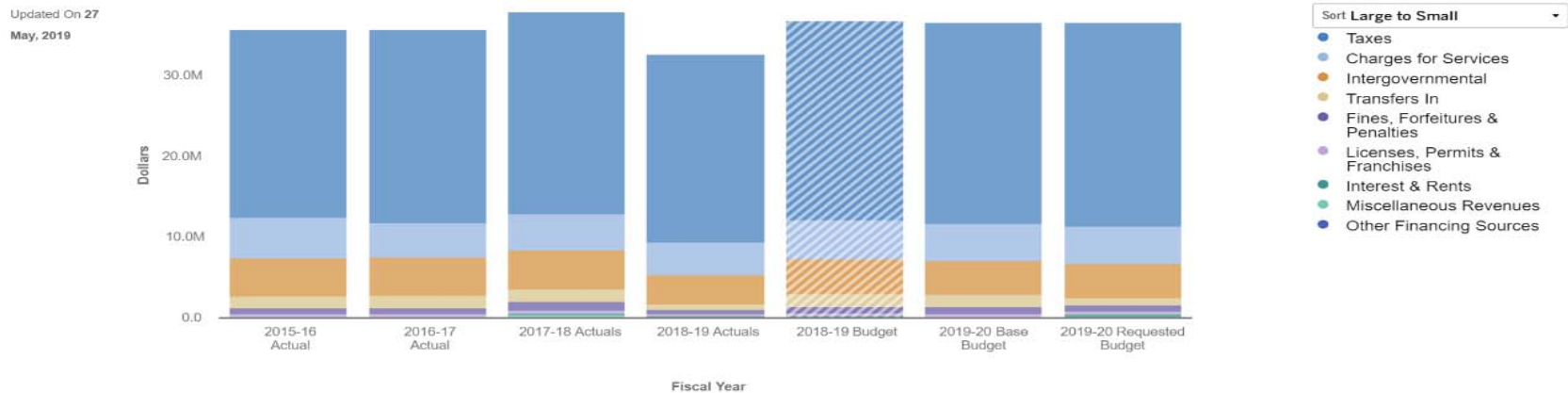
COMPONENTS OF FUND BALANCE	2016	2017	2018
NONSPENDABLE	\$913,000	\$1,412,000	\$1,521,000
GENERAL RESERVE	1,663,000	1,939,000	2,219,000
ECONOMIC STABILIZATION	--	1,124,000	1,805,000
ASSIGNMENTS	198,000	1,784,000	1,188,000
BUDGET DEFICIT (next FY)	4,567,000	5,660,000	6,154,000
UNASSIGNED	2,146,000	1,480,000	--
TOTAL GF BALANCES	\$9,487,000	\$13,399,000	\$12,887,000

LOSS
OF
STRATEGIC
RESOURCES



2019-2020 REQUESTED BUDGET

GF Revenues – Historical and Estimated



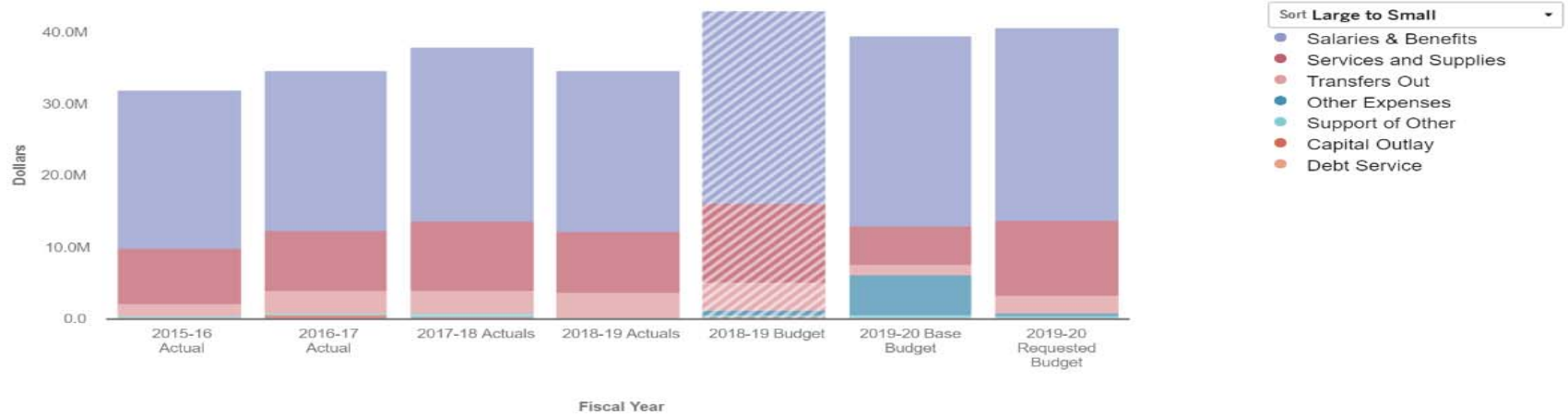
	2015-16 Actual	2016-17 Actual	2017-18 Actuals	2018-19 Actuals	2018-19 Budget	2019-20 Base Budget	2019-20 Requested Budget
Expand All							
▶ Taxes	\$ 23,240,447	\$ 23,816,859	\$ 24,949,712	\$ 23,259,908	\$ 24,704,800	\$ 24,967,600	\$ 25,314,166
▶ Charges for Services	5,037,467	4,335,944	4,482,050	4,115,467	4,890,188	4,614,788	4,572,477
▶ Intergovernmental	4,754,755	4,746,926	4,774,607	3,592,080	4,232,871	4,141,501	4,221,823
▶ Transfers In	1,363,410	1,498,619	1,557,084	645,893	1,635,073	1,582,952	878,834
▶ Fines, Forfeitures & Penalties	750,906	797,918	1,060,659	502,842	810,025	830,025	830,025
▶ Licenses, Permits & Franchises	368,746	314,097	340,140	310,640	291,400	291,400	312,400
▶ Interest & Rents	81,727	122,541	242,266	257,133	237,378	238,304	531,092
▶ Miscellaneous Revenues	121,525	90,339	231,385	26,142	111,200	19,900	14,500
▶ Other Financing Sources	22,800	238	224,001	0	0	0	0
Total	\$ 35,741,782	\$ 35,723,480	\$ 37,861,904	\$ 32,710,105	\$ 36,912,935	\$ 36,686,470	\$ 36,675,317

Data filtered by Revenues, GENERAL FUND and exported on May 27, 2019. Created with OpenGov

2019-2020 REQUESTED BUDGET

GF Expenditures – Historical and Estimated

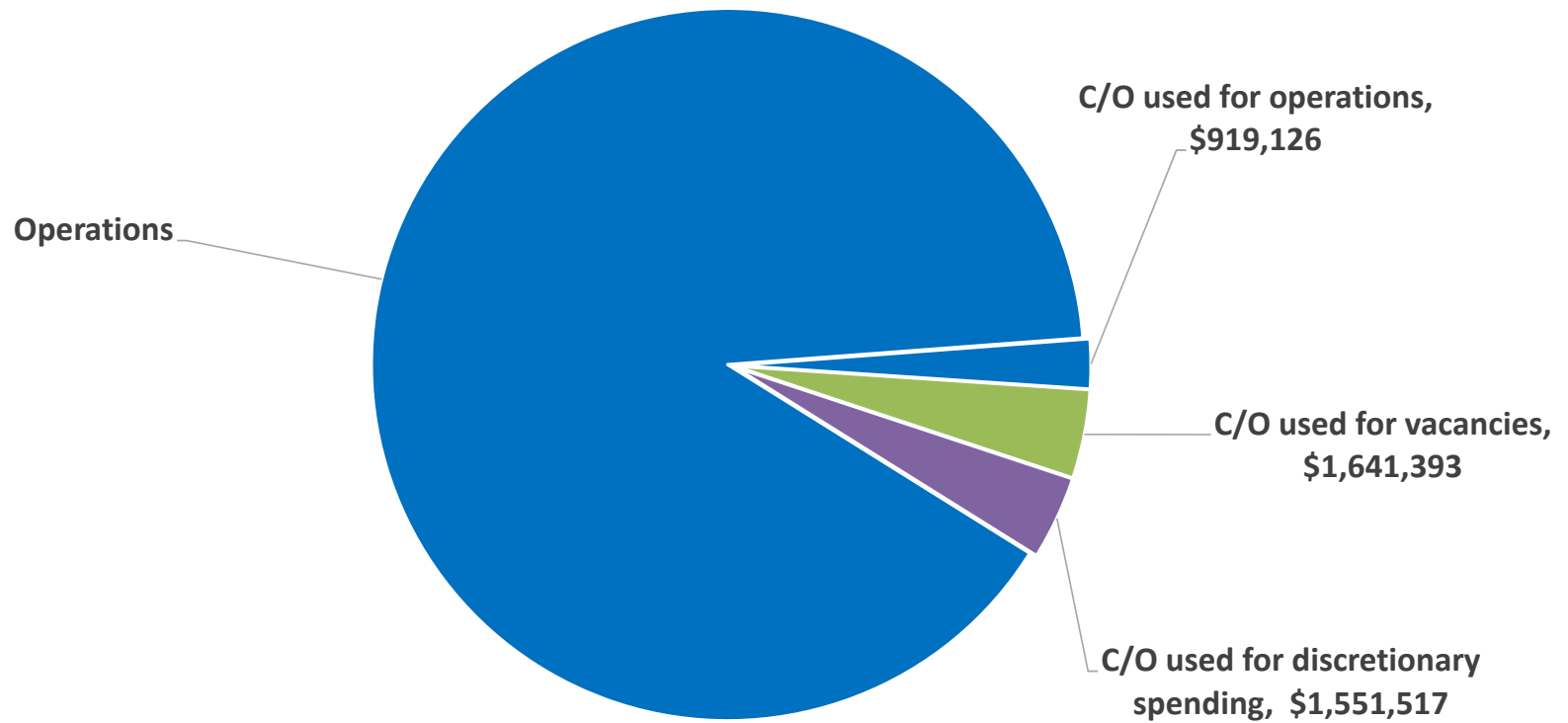
Updated On 27
May, 2019



	2015-16 Actual	2016-17 Actual	2017-18 Actuals	2018-19 Actuals	2018-19 Budget	2019-20 Base Budget	2019-20 Requested Budget
Expand All							
▶ Salaries & Benefits	\$ 22,020,065	\$ 22,431,992	\$ 24,285,021	\$ 22,482,216	\$ 26,891,160	\$ 26,599,798	\$ 26,865,479
▶ Services and Supplies	7,801,938	8,278,484	9,627,560	8,435,915	10,894,947	5,318,508	10,507,303
▶ Transfers Out	1,646,720	3,182,714	3,264,971	3,594,420	4,014,618	1,428,976	2,440,257
▶ Other Expenses	0	0	0	0	595,137	5,740,521	396,270
▶ Support of Other	270,454	257,956	465,133	39,033	333,258	380,990	480,990
▶ Capital Outlay	233,848	569,101	263,173	91,993	107,016	166,000	49,116
▶ Debt Service	46,056	98,700	129,333	116,347	230,742	47,938	47,938
Total	\$ 32,019,080	\$ 34,818,946	\$ 38,035,190	\$ 34,759,925	\$ 43,066,878	\$ 39,682,732	\$ 40,787,353

Data filtered by Expenses, GENERAL FUND and exported on May 27, 2019. Created with OpenGov

BUDGET SNAPSHOT – *GF Requested* *Budget*



TARGET – structurally balanced GF budget

**LOOKING TO
THE FUTURE
AND
THINKING
LONG-TERM**

FISCAL YEAR	GF BUDGET DEFICIT
2018-2019	\$(6,154,000)
2019-2020	\$(3,000,000)
2020-2021	\$(2,000,000)
2021-2022 (next recession???)	\$(1,000,000)
2022-2023 (next recession???)	\$--

STRATEGIES – achieving structural balance

- REVENUE GENERATION

- TOT, TBID
- Sales taxes
- Fees

- WORKFORCE

- Precision
- Retirements
- Size of Workforce
- Cost of Benefits
- Unfunded PERS, OPEB liabilities

- EXPENDITURES

- Precision
- Competitive vendor selections
- Policy for reimbursable services
- Bulk purchases
- Pursue discounts
- Outsource/insource decisions

One of Many Possibilities for getting to a \$3,000,000 GF Budget Deficit

	REQUESTED	ADJUSTMENTS	TARGET
REVENUES	\$36,675,000	\$150,000	\$36,825,000
FILLED POSITIONS	24,703,000	--	24,703,000
VACANCIES	1,641,000	(318,000)	1,323,000
SERVICES & SUPPLIES	10,906,000	(234,000)	10,672,000
DEBT SERVICE	48,000	--	48,000
TRANSFERS OUT	1,937,000	200,000	2,137,000
DISCRETIONARY REQUESTS	1,552,000	(610,000)	942,000
	\$(4,112,000)	\$1,112,000	\$(3,000,000)

TOT REVENUES	\$	100,000
SALES TAXES		25,000
OTHER REVENUES		25,000
VACANCIES - MONTHS NOT FILLED		318,000
DEPTS - S&S SAVINGS		234,000
ECON STABLIZATION		(200,000)
PSO POSITIONS		176,000
TBID CONSULTING		40,000
FIRST FIVE		50,000
HOUSING		200,000
LOCAL GRANTS		115,000
FISH		29,000
<i>Total Adjustments</i>	<u>\$</u>	<u>1,112,000</u>

GF Requested Budget

Included vs Excluded

- **INCLUDES**

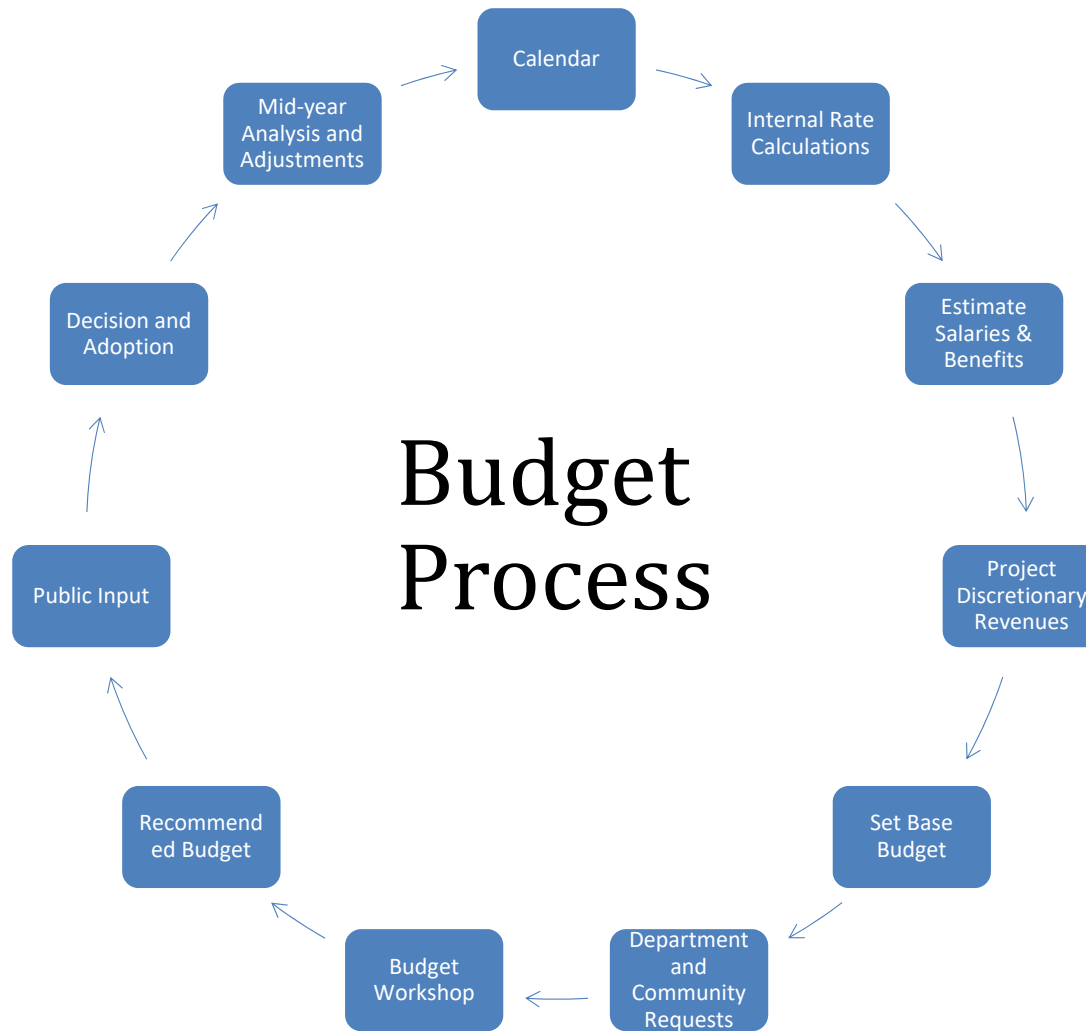
- Road (SB1) MOE \$522,033
- Subsidies for Conway, Senior Services, Cemeteries, General Relief \$328,000
- CARB Replacement \$730,600
- Tri-Valley EMS Expansion \$252,000
- Affordable Housing set-aside \$200,000
- First Responder subsidies \$170,000
- All filled positions + positions to be filled \$26,345,000 (including 5% for MCPE)

- **EXCLUDES**

- Road fund fiscal stabilization
- Insurance premium increase \$53,000 (all funds)
- Programing of capital improvement projects
- Contributions to General Reserve
- Contributions to Economic Stabilization

Future Revenue Enhancements

- SPECIAL SALES TAX ADD-ON (0.25% to 1.0%, \$165,000 - \$660,000)
- TOT – 1% INCREASE (\$300,000)
- TOURISM BUSINESS IMPROVEMENT DISTRICT (TBID)
- FEE COSTING & ADJUSTMENT
- SPECIAL ASSESSMENTS (HOUSING, EMS)
- BOND FINANCING (EMERGENCY COMMUNICATIONS)



PURPOSE OF WORKSHOP

- ***BOARD, ADMINISTRATION, DEPARTMENTS***
 - Share information
 - Discuss budget issues
 - Ask Questions
 - Make Comments
 - Obtain Feedback
 - Consensus on Budget Goals and Final Development Steps

NEXT STEPS

June 4 – Board of Supervisors Regular Meeting

- Hear from Community Stakeholders: public, community organizations, external groups and agencies
 - Budget update agenda item
- June 7 – Release Recommended Budget, 10 day notice for budget hearings
- June 11 – Board of Supervisors Regular Meeting
 - Budget update agenda item?
- June 18 Board of Supervisors Regular Meeting
 - Budget Hearing – opportunity for additional public comment
 - Debate, Consensus, Adoption

FY 2019-2020 BUDGET WORKSHOP

PROBATION – Workforce Costs by Position

EMS

Reports > 6. Workforce Report (GRID VERSION)

Filters Views

SHOW

TOTAL COMP... ▾

BROKEN DOWN BY

Position Name ▾

FILTERED BY All >

Filters 1 >

Columns >

Aggregates >

AMOUNTS

Incremental ▾

TOTAL FOR A YEAR
\$3,371,059.02

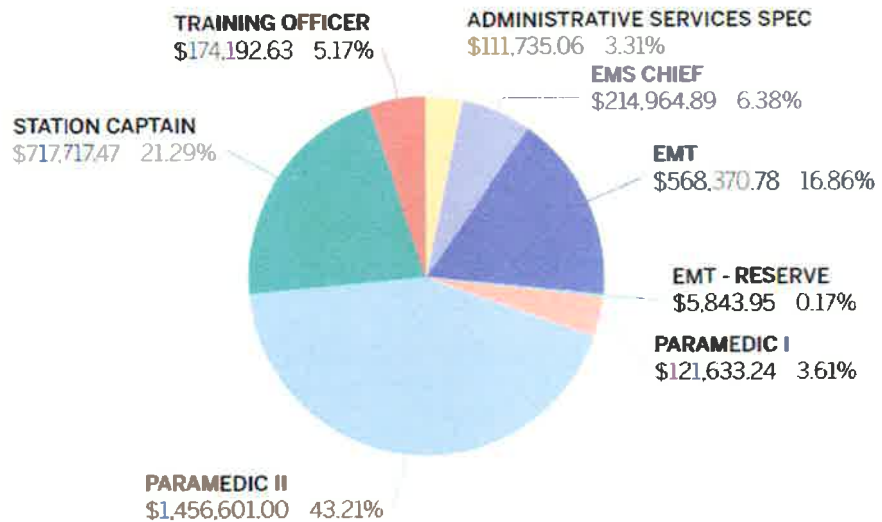
+ Save view

Search

← Back ↻ Reset {} EMS ×

Updated On 13 May, 2019

VISUALIZATION



Records

Public Health Clinics

Benton:

Immunizations, MCAH Services & HIV/STD Testing. Call for an appointment at (760) 924-1830.

Bridgeport:

Immunizations, MCAH Services & HIV/STD Testing.

Every Thursday of the month from 2-5pm at the Bridgeport Health Department. Extended hours offered upon request. Call for an appointment at (760) 924-1830.

Mammoth Lakes:

Immunizations, MCAH Services & HIV/STD Testing.

Every Wednesday from 8:30am-4pm, as well as additional times as needed at the Mammoth Lakes Health Department. Call for an appointment (760) 924-1830.

Walker:

Immunizations, MCAH Services & HIV/STD Testing. Call for an appointment at (760) 924-1830.

Mono County Health Collaboratives

- Breastfeeding Taskforce
- Local Oral Health Coalition
- Nutrition & Physical Activity Taskforce
- Prevention Coalition

For all other services or to learn more about our health collaboratives, call the Mammoth Lakes Health Department at 760.924.1830

We accept collect calls

Mono County WIC Program

Hours of Operation and Locations for the Mono County WIC Program (subject to change)

Mammoth Lakes Office: Monday, Wednesday, Thursday, and Friday from 8am - 4pm. Closed on 1st, 2nd, and 3rd Tuesday of each month. Located at the Mammoth Lakes Health Department.

Travel Clinics

Bridgeport: 1st Tuesday of the month from 9:30-11am. Located at the Bridgeport Health Department.

Walker: 1st Tuesday of the month from 12:30-2:30pm. Located at the Walker Community Center.

June Lake: 2nd Tuesday of the month from 9-10am. Located at the June Lake Community Center.

Lee Vining: 2nd Tuesday of the month from 12-2pm. Located at the Lee Vining Community Center.

Coleville: 3rd Tuesday of the month from 9am-3pm. Located at the Marine Base Family Building.

Mammoth Lakes

(760) 924-1830

437 Old Mammoth Rd. Suite Q

Bridgeport

(760) 932-5580

37 Emigrant Road

MONO COUNTY HEALTH DEPARTMENT



Serving the Residents
and Visitors of
Mono County

Protecting Health
Preventing Disease
Promoting Wellness

Environmental Health

Planning, inspection, enforcement, and public education in the regulation of food establishments, sewage disposal facilities, water systems, well construction, swimming pools and recreational health facilities, occupied housing, underground storage tank facilities, solid waste facilities, land use development, rabies and vector control, and the management of hazardous waste and materials.

- **CUPA:** Oversight of businesses that manage hazardous materials and/or hazardous waste.
- **Food Program:** Promotes safe food preparation, production and service in food facilities in order to prevent the occurrence of foodborne illnesses.
- **Radon:** Free home tests to assess for this odorless/colorless gas.
- **Small Water System Program:** Ensures that each small public water system provides the users with wholesome potable water which meets State standards and regulations.
- **Solid Waste Program:** Ensures that solid waste permit processes and procedures, closure and post-closure requirements, and solid waste facility operations are all conducted in keeping with State standards and regulations.
- **Vector Control:** Protects residents and visitors from diseases transmitted from insects and other animals to humans.
- **Wastewater:** onsite sewage treatment and disposal system registration.

Children's Medical Services

California Children's Services (CCS): Diagnosis and treatment for children from birth to age 21 with specific medical conditions, usually of a more serious or chronic nature.

Child Health and Disability Program (CHDP): Assists with physical exams, immunizations, and dental care for income-eligible children and young adults.

Health Care Program for Children in Foster Care (HCPFC): Provides medical case management services for children who are dependents of Mono County either through Child Welfare Services or Probation.

Communicable Disease Program

Monitor communicable diseases, decrease those diseases and report as required to the California Department of Public Health. This program includes the screening, linkage to care, and in some cases, treatment for Tuberculosis.

Emergency Preparedness Program

In partnership with the community partners, promotes a healthy future for Mono County that includes vital emergency preparedness planning with you, your family and the whole community.

Immunization Program

Creates a safety net to ensure that adults and children without insurance, or who are VFC eligible, have access to vaccinations. Additionally, offering consultation, vaccines, and some prescriptions for travel abroad.

Local Oral Health Program

Promotes oral health in children and adults throughout Mono County by providing education and prevention opportunities to our residents.

Maternal, Child & Adolescent Health

Through collaboration and program development, works to improve the health of women of reproductive age, infants, children, adolescents and their families. MCAH Clinic services include:

- Birth control counseling, pregnancy testing, and prenatal vitamins
- Bicycle helmet program
- SIDS / SUID outreach and education

STD & HIV/AIDS Programs

Mono County programs include the following:

- AIDS Drugs Assistance Program
- Free Condom Bags
- HIV Care Program
- HIV / STD Testing
- HIV Surveillance

Tobacco Education & Cessation

Strives to increase the awareness of the effects of smoking on public health, improve communities' abilities to change smoking behavior, increase the influence of existing legal and economic factors that discourage smoking, and strengthen social norms and values supporting non-smoking.

